



TRANSPORTATION CABINET

Frankfort, Kentucky 40622
www.transportation.ky.gov/

Steven L. Beshear
Governor

Michael W. Hancock, P.E.
Secretary

November 17, 2015

CALL NO. 326
CONTRACT ID NO. 151086
ADDENDUM # 2

Subject: Jessamine County, FD04 SPP 057 1486 000-002
Letting November 20, 2015

- (1) Revised - Plan Sheets
- (2) Added - Note - Pages 1-3 of 3
- (3) Revised - Bid Items - Pages 175-178(a) of 178

Proposal revisions are available at <http://transportation.ky.gov/Construction-Procurement/>.

Plan revisions are available at <http://www.lynnimaging.com/kytransportation/>.

If you have any questions, please contact us at 502-564-3500.

Sincerely,

A handwritten signature in cursive script that reads "Rachel Mills".

Rachel Mills, P.E.
Director
Division of Construction Procurement

RM:ks
Enclosures



An Equal Opportunity Employer M/F/D

GENERAL SUMMARY

COUNTY OF	ITEM NO.	SHEET NO.
JESSAMINE	07-0376.00	R2I

ITEM	DESCRIPTION	UNIT	Project Total																
01825	ISLAND CURB AND GUTTER	LF	26758																
02091	REMOVE PAVEMENT	SOYD	285																
02159	TEMP DITCH	LF	14791																
02200	ROADWAY EXCAVATION	CUYD	247356																
02242	WATER (4)	MGAL	10																
02429	RIGHT-OF-WAY MONUMENT TYPE 1	EACH	115																
02432	WITNESS POST	EACH	3																
02483	CHANNEL LINING CLASS II (2)	TON	3720																
02484	CHANNEL LINING CLASS III (3)	TON	1741																
02545	CLEARING AND GRUBBING (1)	LS	1																
02650	MAINTAIN & CONTROL TRAFFIC	LS	1																
02701	TEMP SILT FENCE	LF	7375																
02703	SILT TRAP TYPE A	EACH	134																
02704	SILT TRAP TYPE B	EACH	134																
02705	SILT TRAP TYPE C	EACH	67																
02706	CLEAN SILT TRAP TYPE A	EACH	402																
02707	CLEAN SILT TRAP TYPE B	EACH	402																
02708	CLEAN SILT TRAP TYPE C	EACH	201																
02014	BARRICADE - TYPE III	EACH	18																
02562	SIGNS	SOFT	175																
02726	STAKING (8)	LS	1																
05950	EROSION CONTROL BLANKET	SOYD	5813																
05953	TEMP SEEDING AND PROTECTION	SOYD	206250																
05985	SEEDING AND PROTECTION	SOYD	148000																
06514	PAVE STRIPING-PERM PAINT-4 IN (5) (6)	LF	45639																
06569	PAVE MARKING-THERMO CROSS-HATCH (5)	SOFT	11098																
06574	PAVE MARKING-THERMO CURV ARROW (5)	EACH	10																
06576	PAVE MARKING-THERMO ONLY (5)	EACH	5																
20782NS714	PAVE MARKING THERMO-BIKE (5)	EACH	17																
24386EC	PAVE MARKING THERMO-BIKE LANE ARROW (5)	EACH	17																
24814EC	PIPELINE INSPECTION	LF	14074																
002351	GUARDRAIL-STEEL W BEAM-S-FACE	LF	2375																
002363	GUARDRAIL CONNECTOR TO BRIDGE END TYPE A	EACH	8																
002367	GUARDRAIL END TREATMENT TYPE 1	EACH	12																
002373	GUARDRAIL END TREATMENT TYPE 3	EACH	1																
01987	DELINEATORS FOR GUARDRAIL	EACH	60																
20166ES810	TEMPORARY PIPE	LF	53																
02555	CONCRETE CLASS "B"	CUYD	9																
05963	INITIAL FERTILIZER	TON	0.53																
05964	20-10-10 FERTILIZER	TON	0.88																
05992	AGRICULTURAL LIMESTONE	TON	10.59																
01000	4" PERFORATED PIPE (7)	LF	1140																
01010	4" NON-PERFORATED PIPE (7)	LF	76																
01020	PERFORATED PIPE HEADWALL TYPE 1 (7)	EACH	6																
01024	PERFORATED PIPE HEADWALL TYPE 2 (7)	EACH	7																
02596	FABRIC - GEOTEXTILE TYPE I (7)	SOYD	1538																
02599	FABRIC - GEOTEXTILE TYPE IV (7)	SOYD	18519																
20210EP69	COHESIVE PILE CORE (7)	CUYD	13458																
10203ND	PAVEMENT ADJUSTMENT (ASPHALT) (9)	LP SUM	1																
10203ND	PAVEMENT ADJUSTMENT (CONCRETE) (9)	LP SUM	1																

NOTES:

- ① APPROX. 66.63 ACRES
- ② INCLUDES 197 TONS FROM PIPE DRAINAGE SUMMARY
- ③ INCLUDES 505 TONS FROM PIPE DRAINAGE SUMMARY
- ④ FOR DUST CONTROL
- ⑤ SEE STRIPING PLANS FOR LOCATIONS
- ⑥ INCLUDES:
24,573 LF 4" WHITE PAINT
21,066 LF 4" YELLOW PAINT
- ⑦ SEE GEOTECH NOTES FOR DETAILS
- ⑧ SURVEY OF AS-BUILT DEVELOPMENT CONSTRUCTION IS INCIDENTAL TO THIS BID ITEM (SEE GENERAL NOTE SHEET)
- ⑨ SEE PROPOSAL FOR SPECIAL NOTE FOR ALTERNATE PAVEMENT BID ADJUSTMENT

PROJECT EARTHWORK TOTALS

45,057 CY	EMB BENCH
147,366 CY	COMMON
49,653 CY	ROCK EXCAVATION
1,651 CY	DITCH LEFT EXCAVATION
3,629 CY	DITCH RIGHT EXCAVATION

247,356 CY TOTAL ROADWAY EXCAVATION

5,302 CY	ROCK ROADBED
4,933 CY	REFILL
191,727 CY	EMBANKMENT IN PLACE

201,962 CY TOTAL EMBANKMENT

FILE NAME: G:\PWORK\JOSHUA_SAMPLES\00643654R00201SU.DGN

USER: Joshua.samples
DATE PLOTTED: November 17, 2015

E-SHEET NAME: R00201SU

MicroStation v8.11.7.443

GENERAL SUMMARY

COUNTY OF	ITEM NO.	SHEET NO.
JESSAMINE	07-0376.00	R21

ITEM	DESCRIPTION	UNIT	Project Total																
01825	ISLAND CURB AND GUTTER	LF	26758																
02091	REMOVE PAVEMENT	SOYD	285																
02159	TEMP DITCH	LF	14791																
02200	ROADWAY EXCAVATION	CUYD	247356																
02242	WATER (4)	MGAL	10																
02429	RIGHT-OF-WAY MONUMENT TYPE 1	EACH	115																
02432	WITNESS POST	EACH	3																
02483	CHANNEL LINING CLASS II (2)	TON	3720																
02484	CHANNEL LINING CLASS III (3)	TON	1741																
02545	CLEARING AND GRUBBING (1)	LS	1																
02650	MAINTAIN & CONTROL TRAFFIC	LS	1																
02701	TEMP SILT FENCE	LF	7375																
02703	SILT TRAP TYPE A	EACH	134																
02704	SILT TRAP TYPE B	EACH	134																
02705	SILT TRAP TYPE C	EACH	67																
02706	CLEAN SILT TRAP TYPE A	EACH	402																
02707	CLEAN SILT TRAP TYPE B	EACH	402																
02708	CLEAN SILT TRAP TYPE C	EACH	201																
02014	BARRICADE TYPE 1	EACH	18																
02562	SIGNS	SOFT	175																
02726	STAKING (8)	LS	1																
05950	EROSION CONTROL BLANKET	SOYD	5813																
05953	TEMP SEEDING AND PROTECTION	SOYD	206250																
05985	SEEDING AND PROTECTION	SOYD	148000																
06514	PAVE STRIPING-PERM PAINT-4 IN (5) (6)	LF	45639																
06569	PAVE MARKING-THERMO CROSS-HATCH (5)	SOFT	11098																
06574	PAVE MARKING-THERMO CURV ARROW (5)	EACH	10																
06576	PAVE MARKING-THERMO ONLY (5)	EACH	5																
20782NS714	PAVE MARKING THERMO-BIKE (5)	EACH	17																
24386EC	PAVE MARKING THERMO-BIKE LANE ARROW (5)	EACH	17																
24814EC	PIPELINE INSPECTION	LF	14074																
002351	GUARDRAIL-STEEL W BEAM-S-FACE	LF	2375																
002363	GUARDRAIL CONNECTOR TO BRIDGE END TYPE A	EACH	8																
002367	GUARDRAIL END TREATMENT TYPE 1	EACH	12																
002373	GUARDRAIL END TREATMENT TYPE 3	EACH	1																
01987	DELINEATORS FOR GUARDRAIL	EACH	60																
20166ES810	TEMPORARY PIPE	LF	53																
02555	CONCRETE CLASS "B"	CUYD	9																
05963	INITIAL FERTILIZER	TON	0.53																
05964	20-10-10 FERTILIZER	TON	0.88																
05992	AGRICULTURAL LIMESTONE	TON	10.59																
01000	4" PERFORATED PIPE (7)	LF	1140																
01010	4" NON-PERFORATED PIPE (7)	LF	76																
01020	PERFORATED PIPE HEADWALL TYPE 1 (7)	EACH	6																
01024	PERFORATED PIPE HEADWALL TYPE 2 (7)	EACH	7																
02596	FABRIC - GEOTEXTILE TYPE I (7)	SOYD	1538																
02599	FABRIC - GEOTEXTILE TYPE IV (7)	SOYD	18519																
20210EP69	COHESIVE PILE CORE (7)	CUYD	13458																
10203ND	PAVEMENT ADJUSTMENT (ASPHALT) (9)	LP SUM	1																
10203ND	PAVEMENT ADJUSTMENT (CONCRETE) (9)	LP SUM	1																

NOTES:

- ① APPROX. 66.63 ACRES
- ② INCLUDES 197 TONS FROM PIPE DRAINAGE SUMMARY
- ③ INCLUDES 505 TONS FROM PIPE DRAINAGE SUMMARY
- ④ FOR DUST CONTROL
- ⑤ SEE STRIPING PLANS FOR LOCATIONS
- ⑥ INCLUDES:
24,573 LF 4" WHITE PAINT
21,066 LF 4" YELLOW PAINT
- ⑦ SEE GEOTECH NOTES FOR DETAILS
- ⑧ SURVEY OF AS-BUILT DEVELOPMENT CONSTRUCTION IS INCIDENTAL TO THIS BID ITEM (SEE GENERAL NOTE SHEET)
- ⑨ SEE PROPOSAL FOR SPECIAL NOTE FOR ALTERNATE PAVEMENT BID ADJUSTMENT

PROJECT EARTHWORK TOTALS

45,057 CY	EMB BENCH
147,366 CY	COMMON
49,653 CY	ROCK EXCAVATION
1,651 CY	DITCH LEFT EXCAVATION
3,629 CY	DITCH RIGHT EXCAVATION
<hr/>	
247,356 CY	TOTAL ROADWAY EXCAVATION
5,302 CY	ROCK ROADBED
4,933 CY	REFILL
191,727 CY	EMBANKMENT IN PLACE
<hr/>	
201,962 CY	TOTAL EMBANKMENT

FILE NAME: G:\PWORK\JOSHUA_SAMPLES\00643654R00201SU.DGN
 USER: Joshua.samples
 DATE PLOTTED: November 17, 2015
 E-SHEET NAME: R00201SU
 MicroStation v8.11.7.443

PAVING AREAS

ITEM	S	Q	U	A	R	E	Y	A	R	D	S
	MAINLINE	TIE #1	TIE #2	APPR LT 361+00	APPR RT 361+00	APPR LT 379+25	APPR LT 414+50	APPR RT 414+50	APPR LT 47+90	ENTRANCES	TOTAL PROJECT
1.25" CL2 ASPH SURE 0.38D PG64-22	45,882.4	1,624.6	1,307.5	1,304.4	2,134.0	1,046.5	1,091.7	1,084.0	1,255.9	5,095.5	61,826.5
3.25" CL2 ASPH BASE 1.00D PG64-22	42,304.4	1,634.7	1,315.1	1,304.4	2,145.8	1,054.9	1,101.9	1,093.1	1,266.3	5,139.3	58,359.9
3.50" CL2 ASPH BASE 1.00D PG64-22	42,304.4	1,661.0	1,335.1	1,304.4	2,176.9	1,075.9	1,126.1	1,114.6	1,291.9	5,256.7	58,647.0
4" CRUSHED STONE BASE	59,247.6	1,713.5	1,375.0	1,658.0	2,215.4	1,109.3	1,168.5	1,157.1	1,353.7	5,835.9	76,834.0
12" LIME STABILIZED ROADBED	46,539.0	3,107.0	1,720.0								51,366.0
ASPHALT CURING SEAL @ 2LBS/SQYD	46,539.0	3,107.0	1,720.0								51,366.0
SAND FOR BLOTTER @ 5LBS/SQYD	46,539.0	3,107.0	1,720.0								51,366.0

PAVING SUMMARY

ITEM CODE	ITEM	UNIT	MAINLINE	APPROACHES	ENTRANCES	MOT	TOTAL PROJECT
00301	CL2 ASPH SURF 0.38D PG64-22	TONS	3,154	746	350		4,250
00212	CL2 ASPH BASE 1.00D PG64-22	TONS	15,706	4,085	1,931		21,722
00003	CRUSHED STONE BASE	TONS	13,627	2,703	1,342		17,672
00013	LIME STABILIZED ROADBED	SQYD	46,539	4,827			51,366
00014	LIME	TON	1,244	129			1,373
00358	ASPHALT CURING SEAL	TON	47	5			52
02702	SAND FOR BLOTTER	TON	116	12			128
002599	GEOTEXTILE FABRIC TYPE III (FOR ROCK ROADBED)	SQYD	7,595	7,595			7,595
24779EC	Intelligent Compaction for Soil	CUYD					247,356
24780EC	Intelligent Compaction for Aggregate Base	TON					17,672
24781EC	Intelligent Compaction for Asphalt	TON					25,972

NOTES

ALL ASPHALT MIXTURES SHALL BE ESTIMATED AT 110 LBS. PER SQ. YD. PER INCH OF DEPTH, UNLESS NOTED OTHERWISE.

- ① ESTIMATED AT 115 LBS. PER SQ. YD. PER INCH OF DEPTH.
- ② ESTIMATED AT 100 LBS. PER SQ. YD. PER INCH OF DEPTH.
- ③ ESTIMATED AT 95 LBS. PER SQ. YD. PER INCH OF DEPTH.

PAVING SUMMARY
ASPHALT ALTERNATE

PAVING AREAS

ITEM	S	Q	U	A		R	E	Y		A	R	D	S
				APPR LT 361+00	APPR RT 361+00			APPR LT 414+50	APPR RT 414+50				
JCP PAVEMENT- 8 IN	45,882.4	1,624.6	1,307.5	1,304.4	2,134.0	1,046.5	1,091.7	1,084.0	1,255.9	5,095.5		61,826.5	
4" CRUSHED STONE BASE	59,247.6	1,713.5	1,375.0	1,658.0	2,215.4	1,109.3	1,168.5	1,157.1	1,353.7	5,835.9		76,834.0	
12" LIME STABILIZED ROADBED	46,539.0	3,107.0	1,720.0									51,366.0	
ASPHALT CURING SEAL @ 2LBS/SQYD	46,539.0	3,107.0	1,720.0									51,366.0	
SAND FOR BLOTTER @ 5LBS/SQYD	46,539.0	3,107.0	1,720.0									51,366.0	

PAVING SUMMARY

ITEM CODE	ITEM	UNIT	MAINLINE	APPROACHES	ENTRANCES	MOT	TOTAL PROJECT
02084	JCP PAVEMENT- 8 IN	SQYD	45,882	10,849	5,096		61,827
00003	CRUSHED STONE BASE	TONS	13,627	2,703	1,342		17,672
00013	LIME STABILIZED ROADBED	SQYD	46,539	4,827			51,366
00014	LIME	TON	1,244	129			1,373
02702	SAND FOR BLOTTER	TON	116	12			128
002599	GEOTEXTILE FABRIC TYPE III (FOR ROCK ROADBED)	SQ.YD	7,595				7,595
24779EC	Intelligent Compaction for Soil	CUYD					247,356
24780EC	Intelligent Compaction for Aggregate Base	TON					17,672

NOTES

ALL ASPHALT MIXTURES SHALL BE ESTIMATED AT 110 LBS. PER SQ. YD. PER INCH OF DEPTH, UNLESS NOTED OTHERWISE.

- ① ESTIMATED AT 115 LBS. PER SQ. YD. PER INCH OF DEPTH.
- ② ESTIMATED AT 100 LBS. PER SQ. YD. PER INCH OF DEPTH.
- ③ ESTIMATED AT 95 LBS. PER SQ. YD. PER INCH OF DEPTH.

COUNTY OF	ITEM NO.	SHEET NO.
JESSAMINE	07-0376.00	R2K

PAVING AREAS

ITEM	S		Q		U		A		R		E		Y		A		R		D		TOTAL PROJECT
	MAINLINE	TIE #1	TIE #2	APPR LT 361+00	APPR RT 361+00	APPR LT 379+25	APPR LT 414+50	APPR RT 414+50	APPR LT 47+90	ENTRANCES											
JCP PAVEMENT- 8 IN	45,882.4	1,624.6	1,307.5	1,304.4	1,046.5	1,091.7	1,084.0	1,255.9	5,095.5												61,826.5
4" CRUSHED STONE BASE	59,247.6	1,713.5	1,375.0	1,658.0	2,215.4	1,168.5	1,157.1	1,353.7	5,835.9												76,834.0
12" LIME STABILIZED ROADBED	46,539.0	3,107.0	1,720.0																		51,366.0
ASPHALT CURING SEAL @ 2LBS/SQYD	46,539.0	3,107.0	1,720.0																		51,366.0
SAND FOR BLOTTER @ 5LBS/SQYD	46,539.0	3,107.0	1,720.0																		51,366.0

PAVING SUMMARY

ITEM CODE	ITEM	UNIT	MAINLINE	APPROACHES	ENTRANCES	MOT	TOTAL PROJECT
02084	JCP PAVEMENT- 8 IN	SQYD	45,882	10,849	5,096		61,827
00003	CRUSHED STONE BASE	TONS	13,627	2,703	1,342		17,672
00013	LIME STABILIZED ROADBED	SQYD	46,539	4,827			51,366
00014	LIME	TON	1,244	129			1,373
02702	SAND FOR BLOTTER	TON	116	12			128
002599	GEOTEXTILE FABRIC TYPE III (FOR ROCK ROADBED)	SQ.YD	7,595				7,595
24779EC	Intelligent Compaction for Soil	CUYD					247,356
24780EC	Intelligent Compaction for Aggregate Base	TON					17,672

NOTES

ALL ASPHALT MIXTURES SHALL BE ESTIMATED AT 110 LBS. PER SQ. YD. PER INCH OF DEPTH, UNLESS NOTED OTHERWISE.

- ① ESTIMATED AT 115 LBS. PER SQ. YD. PER INCH OF DEPTH.
- ② ESTIMATED AT 100 LBS. PER SQ. YD. PER INCH OF DEPTH.
- ③ ESTIMATED AT 95 LBS. PER SQ. YD. PER INCH OF DEPTH.

PIPE DRAINAGE SUMMARY

COUNTY OF JESSAMINE ITEM NO. 07-0376.00 SHEET NO. R2L

SHEET NO.	ITEM CODE	SKEW	COVER HEIGHT	DESIGN pH LEVEL	CULVERT PIPE						S&F BOX INLET-OUTLET - 18 IN	PIPE CULVERT HEADWALL						STORM SEWER PIPE						DROP BOX INLET				FABRIC-GEOTEXTILE TY IV FOR PIPES	CHANNEL LINING CLASS II	CHANNEL LINING CLASS III	DITCH EXCAVATION	REMARKS								
					18 INCH	30 INCH	42 INCH	48 INCH	54 INCH	60 INCH		15 INCH	18 INCH	24 INCH	30 INCH	36 INCH	48 INCH	54 INCH	60 INCH	ENTRANCE PIPE - 15 IN	ENTRANCE PIPE - 18 IN	15 INCH	18 INCH	24 INCH	30 INCH	36 INCH	CURB BOX INLET TY A						CURB BOX INLET TY B	TYPE 1	TYPE 2	TYPE 5D	TYPE 13S			
					462	466	469	470	471	472	1450	1202	1204	1208	1210	1212	1216	1218	1220	440	441	521	522	524	526	528	1456	1480	1490	1493	1511	1568	2600	2483	2484	2200				
	UNIT TO BID						LIN FT						EACH						LIN FT						EACH				SY	TONS	CY									
	CROSS DRAINS																																							
	310+50	50° RT	8.5	M						260										2																		262	1208	
	331+80	20° RT	10.6	M	120						1	1																									39	21		
	381+95	35° RT	18.3	M													2			2																112	38			
	408+90	10° LT	7.1	M		155																														32	20			
	417+21	39° LT	8.2	M																																	141	125		
	APPR LT 379+25																																							
	48+60	0°	1.8	M	40						2																													
	ENTR PIPES																																							
	ENTR RT 345+80																																							
	ENTR RT 389+25																																							
	ENTR RT 404+50																																							
	ENTR LT 418+30																																							
	APPR RT 361+00																																							
	ENTR RT 51+65																																							
	APPR LT 379+25																																							
	ENTR LT 48+30																																							
	APPR LT 414+50																																							
	ENTR RT 46+05																																							
	ENTR RT 48+45																																							
	APPR RT 414+50																																							
	ENTR LT 51+85																																							
	APPR LT 47+90																																							
	ENTR RT 45+75																																							
	STORM SEWER																																							
	SYSTEM 1																																							
	LT 305+55																																							
	RT 305+55																																							
	LT 308+00																																							
	RT 308+00																																							
	LT 310+50																																							
	LT 305+55 TO LT 308+00																																							
	RT 305+55 TO RT 308+00																																							
	RT 308+00 TO LT 308+00																																							
	LT 308+00 TO LT 310+50																																							
	LT 310+50 TO OUTLET																																							
	SYSTEM 2																																							
	RT 310+50																																							
	LT 312+32.67																																							
	RT 312+32.67																																							
	LT 312+67.85																																							
	RT 312+67.85																																							
	DBI RT 312+67.85																																							
	SHEET TOTALS				160	155	86	185	229	260	3	0	2	0	2	0	2	2	2	259	172	484	366	0	0	0	10	0	0	1	0	0	0	0	0	0	0	183	413	1412
	TOTAL PROJECT																																							

FILE NAME: G:\PWORK\CORY.JONES\0643581\SUMM_PIPE.DGN
 USER: Cory.Jones
 DATE PLOTTED: November 13, 2015
 E-SHEET NAME: R020LSU
 MicroStation v8.1i.7.443

PIPE DRAINAGE SUMMARY

SHEET NO.	ITEM CODE	SKEW	COVER HEIGHT	DESIGN pH LEVEL	CULVERT PIPE						PIPE CULVERT HEADWALL								STORM SEWER PIPE					DROP BOX INLET				FABRIC-GEOTEXTILE TY IV FOR PIPES	CHANNEL LINING CLASS II	CHANNEL LINING CLASS III	DITCH EXCAVATION	REMARKS							
					18 INCH	30 INCH	42 INCH	48 INCH	54 INCH	60 INCH	S&F BOX INLET-OUTLET - 18 IN	15 INCH	18 INCH	24 INCH	30 INCH	36 INCH	48 INCH	54 INCH	60 INCH	ENTRANCE PIPE - 15 IN	ENTRANCE PIPE - 18 IN	15 INCH	18 INCH	24 INCH	30 INCH	36 INCH	CURB BOX INLET TY A						CURB BOX INLET TY B	TYPE 1	TYPE 2	TYPE 5D	TYPE 13S		
					462	466	469	470	471	472	1450	1202	1204	1208	1210	1212	1216	1218	1220	440	441	521	522	524	526	528	1456	1480	1490	1493	1511	1568	2600	2483	2484	2200			
	UNIT TO BID				LIN FT						EACH								LIN FT					EACH				SY	TONS	CY									
	STORM SEWER SYSTEM 10																																						
	APPR LT 361+00																																						
	RT 45+95																																				(6, 6, H=5.08')		
	LT 46+00																																				(11, 6, H=4.67')		
	RT 48+30																																				(4, 2, H=4.08')		
	LT 48+47																																				(4, 2, H=4.08')		
	APPR LT 47+90																																						
	LT 49+00																																					(H=3.80')	
	RT 49+00																																				(H=3.52')		
	ENTR RT 47+90																																						
	LT 10+70																																					(H=3.52')	
	RT 10+70																																				(H=3.52')		
	RT 45+95 TO OUTLET												1																										
	LT 46+00 TO RT 45+95																																						
	RT 49+00 TO LT 46+00																																						
	LT 49+00 TO RT 49+00																																						
	LT 48+47 TO LT 49+00																																						
	RT 10+70 TO RT 45+95																																						
	LT 10+70 TO RT 10+70																																						
	RT 48+30 TO LT 10+70																																						
	SYSTEM 11																																						
	423+33.50	7° LT						40																														28	EXTEND IN KIND
	SHEET TOTALS				0	0	0	0	40	0	0	0	1	0	0	0	0	0	0	0	0	0	0	0	0	0	4	0	0	0	0	0	0	0	0	0	0	0	
	TOTAL PROJECT				160	155	86	185	229	260	3	2	4	1	4	1	2	2	2	259	172	6761	2185	2321	203	110	64	11	1	1	4	1	0	0	194	477	1412		

FILE NAME: G:\PWORK\JOSHUA_SAMPLES\0643581\SUMM_PIPE.DGN
 USER: Joshua.samples
 DATE PLOTTED: November 16, 2015
 E-SHEET NAME: R002005U
 MicroStation v8.11.7.443

GENERAL & SPECIAL NOTES

165 BEFORE YOU DIG

THE CONTRACTOR IS INSTRUCTED TO CALL 1-800-752-6007 TO REACH KY 811, THE ONE-CALL SYSTEM FOR INFORMATION ON THE LOCATION OF EXISTING UNDERGROUND UTILITIES. THE CALL IS TO BE PLACED A MINIMUM OF TWO (2) AND NO MORE THAN TEN (10) BUSINESS DAYS PRIOR TO EXCAVATION. THE CONTRACTOR SHOULD BE AWARE THAT OWNERS OF UNDERGROUND FACILITIES ARE NOT REQUIRED TO BE MEMBERS OF THE KY 811 ONE-CALL BEFORE-U-DIG (BUD) SERVICE. THE CONTRACTOR MUST COORDINATE EXCAVATION WITH THE UTILITY OWNERS, INCLUDING THOSE WHOM DO NOT SUBSCRIBE TO KY 811. IT MAY BE NECESSARY FOR THE CONTRACTOR TO CONTACT THE COUNTY CLERK TO DETERMINE WHAT UTILITY COMPANIES HAVE FACILITIES IN THE AREA.

233 EARTHWORK ADJUSTMENTS FOR ALTERNATE PAVEMENT DESIGNS

CROSS-SECTIONS FOR THIS PROJECT WERE DEVELOPED FOR A PAVEMENT THICKNESS OF 13 INCHES. INCLUDED ARE TYPICAL SECTIONS FOR ALTERNATE PAVEMENT DESIGNS. THERE ARE NO DEVELOPED CROSS-SECTIONS FOR ALL ALTERNATIVES SO TYPICAL SECTIONS GOVERN OVER CROSS-SECTIONS. EARTHWORK QUANTITIES WILL NOT BE ADJUSTED TO MATCH PAVEMENT ALTERNATE BID.

THE EARTHWORK QUANTITIES SHOWN IN THE PLANS ARE BASED ON THE ASPHALT PAVEMENT TYPICAL SECTION. IF THE CONCRETE PAVEMENT ALTERNATE IS SELECTED IT WILL BE THE RESPONSIBILITY OF THE CONTRACTOR TO ADJUST THE EARTHWORK TO CONSTRUCT TO THE PROFILE GRADE SHOWN IN THE PLANS. PAYMENT FOR EXCAVATION AND/OR EMBANKMENT WILL BE BASED ON THE PLAN QUANTITIES.

276 LIME STABILIZED ROADBED

STABILIZE THE TOP 12 INCHES OF THE FINISHED ROADBED WITH LIME IN ACCORDANCE WITH SECTION 208 OF THE STANDARD SPECIFICATIONS. USE SELECT SOILS, HAVING A MINIMUM C.B.R VALUE OF 3 FOR THIS PURPOSE.

THE LIME CONTENT IS 6 PERCENT BY WEIGHT, AND THE ESTIMATED PLAN QUANTITY USES AN AVERAGE DRY DENSITY OF 99 LBS/CUBIC FEET. HOWEVER, ADJUST THE QUANTITY AFTER CONSTRUCTING THE ROADBED AND SUBMITTING THE SAMPLES FOR TESTING. THIS TAKES APPROXIMATELY TWO WEEKS.

444 ASPHALT PAVEMENT RIDE QUALITY

PAVEMENT RIDEABILITY REQUIREMENTS, IN ACCORDANCE WITH SECTION 410 OF THE STANDARD SPECIFICATIONS, SHALL APPLY ON THIS PROJECT. CATEGORY B SHALL APPLY.

447 COMPACTION OF ASPHALT MIXTURES

WILL ACCEPT THE COMPACTION OF ASPHALT MIXTURES FURNISHED FOR DRIVING LANES AND RAMPS AT ONE INCH (25 MM) OR GREATER ON THIS PROJECT BY OPTION A ACCORDING TO SUBSECTIONS 402 AND 403 OF THE CURRENT STANDARD SPECIFICATIONS. USE JOINT CORES AS DESCRIBED IN SUBSECTION 402.03.02 FOR SURFACE MIXTURES ONLY. WILL ACCEPT THE COMPACTION OF ALL OTHER ASPHALT MIXTURES BY OPTION B.

455 EDGE KEY

THIS WORK INCLUDES CUTTING OUT THE EXISTING ASPHALT SURFACE TO A MINIMUM DEPTH AND WIDTH AS DETAILED ELSEWHERE IN THE PLANS SO THAT THE NEW SURFACE MAY HEEL INTO THE EXISTING SURFACE. THE CONTRACT UNIT PRICE BID LINEAR FOOT FOR "EDGE KEY" INCLUDES ALL NECESSARY MATERIALS, LABOR AND EQUIPMENT NECESSARY TO PERFORM THE WORK AND DISPOSE OF THE REMOVED ASPHALT MATERIAL.

555 JPC RIDE QUALITY

APPLY JPC PAVEMENT SMOOTHNESS REQUIREMENTS, IN ACCORDANCE WITH SUBSECTION 501.03.19 OF THE STANDARD SPECIFICATIONS, ON THIS PROJECT.

650 STANDARD DRAWINGS

STANDARD DRAWINGS ARE NOT ATTACHED TO THESE PLANS. A STANDARD DRAWING BOOK AND THE HEADWALL SUPPLEMENTAL BOOK MAY BE OBTAINED FROM THE POLICY SUPPORT BRANCH OF THE DEPARTMENT OF ADMINISTRATIVE SERVICES IN FRANKFORT, KY. AT (502)564-4610.

WORK AROUND POWER LINES

CONTRACTOR IS NOT TO OPERATE EQUIPMENT OR OTHERWISE WORK WITHIN A 20 FOOT ENVELOPE KENTUCKY UTILITIES TRANSMISSION LINES.

CONTRARY TO KYTC STANDARD DRAWING RBR-020-05 THE GUARDRAIL END TREATMENT ET-PLUS MANUFACTURED BY TRINITY INDUSTRIES WILL NOT BE PERMITTED AS AN OPTION FOR BID ITEM "GUARDRAIL END TREATMENT TYPE I".

PROVIDE AND USE A MATERIAL TRANSFER VEHICLE ACCORDING TO SECTION 403.02.10 AND 403.03.05 OF THE KYTC STANDARD SPECIFICATIONS

CONTRACTOR SHALL COORDINATE WITH CONTRACTORS ON ADJACENT DEVELOPMENT PROJECTS AS NECESSARY AND ADJUST PLANS AS NEEDED WITH DIRECTION AND APPROVAL OF THE ENGINEER. THE EXISTING SURVEY INFORMATION INCLUDES THE PROPOSED DEVELOPMENT PLANS BUT NOT THE AS-BUILT INFORMATION. ANY ADDITIONAL SURVEYING OF THE AS-BUILT DEVELOPMENT CONSTRUCTION SHALL BE INCIDENTAL TO THE STAKING BID ITEM.

SPECIAL PROVISIONS AND NOTES

SPECIAL PROVISION 69 - SPECIAL PROVISION FOR EMBANKMENT AT BRIDGE END BENT STRUCTURES
 SPECIAL NOTE IIM - BARCODE LABEL ON PERMANENT SIGNS
 SPECIAL NOTE FOR INTELLIGENT COMPACTION FOR ASPHALT MIXTURES
 SPECIAL NOTE FOR INTELLIGENT COMPACTION FOR SOIL AND AGGREGATES
 SPECIAL NOTE FOR DOWEL BAR AND TIE BAR PLACEMENT IN JPC PAVEMENT
 SPECIAL NOTE FOR ALTERNATE PAVEMENT BID ADJUSTMENT

GENERAL & SPECIAL NOTES

165 BEFORE YOU DIG

THE CONTRACTOR IS INSTRUCTED TO CALL 1-800-752-6007 TO REACH KY 811, THE ONE-CALL SYSTEM FOR INFORMATION ON THE LOCATION OF EXISTING UNDERGROUND UTILITIES. THE CALL IS TO BE PLACED A MINIMUM OF TWO (2) AND NO MORE THAN TEN (10) BUSINESS DAYS PRIOR TO EXCAVATION. THE CONTRACTOR SHOULD BE AWARE THAT OWNERS OF UNDERGROUND FACILITIES ARE NOT REQUIRED TO BE MEMBERS OF THE KY 811 ONE-CALL BEFORE-U-DIG (BUD) SERVICE. THE CONTRACTOR MUST COORDINATE EXCAVATION WITH THE UTILITY OWNERS, INCLUDING THOSE WHOM DO NOT SUBSCRIBE TO KY 811. IT MAY BE NECESSARY FOR THE CONTRACTOR TO CONTACT THE COUNTY CLERK TO DETERMINE WHAT UTILITY COMPANIES HAVE FACILITIES IN THE AREA.

233 EARTHWORK ADJUSTMENTS FOR ALTERNATE PAVEMENT DESIGNS

CROSS-SECTIONS FOR THIS PROJECT WERE DEVELOPED FOR A PAVEMENT THICKNESS OF 13 INCHES. INCLUDED ARE TYPICAL SECTIONS FOR ALTERNATE PAVEMENT DESIGNS. THERE ARE NO DEVELOPED CROSS-SECTIONS FOR ALL ALTERNATIVES SO TYPICAL SECTIONS GOVERN OVER CROSS-SECTIONS. EARTHWORK QUANTITIES WILL NOT BE ADJUSTED TO MATCH PAVEMENT ALTERNATE BID.

THE EARTHWORK QUANTITIES SHOWN IN THE PLANS ARE BASED ON THE ASPHALT PAVEMENT TYPICAL SECTION. IF THE CONCRETE PAVEMENT ALTERNATE IS SELECTED IT WILL BE THE RESPONSIBILITY OF THE CONTRACTOR TO ADJUST THE EARTHWORK TO CONSTRUCT TO THE PROFILE GRADE SHOWN IN THE PLANS. PAYMENT FOR EXCAVATION AND/OR EMBANKMENT WILL BE BASED ON THE PLAN QUANTITIES.

276 LIME STABILIZED ROADBED

STABILIZE THE TOP 12 INCHES OF THE FINISHED ROADBED WITH LIME IN ACCORDANCE WITH SECTION 208 OF THE STANDARD SPECIFICATIONS. USE SELECT SOILS, HAVING A MINIMUM C.B.R VALUE OF 3 FOR THIS PURPOSE.

THE LIME CONTENT IS 6 PERCENT BY WEIGHT, AND THE ESTIMATED PLAN QUANTITY USES AN AVERAGE DRY DENSITY OF 99 LBS/CUBIC FEET. HOWEVER, ADJUST THE QUANTITY AFTER CONSTRUCTING THE ROADBED AND SUBMITTING THE SAMPLES FOR TESTING. THIS TAKES APPROXIMATELY TWO WEEKS.

444 ASPHALT PAVEMENT RIDE QUALITY

PAVEMENT RIDEABILITY REQUIREMENTS, IN ACCORDANCE WITH SECTION 410 OF THE STANDARD SPECIFICATIONS, SHALL APPLY ON THIS PROJECT. CATEGORY B SHALL APPLY.

447 COMPACTION OF ASPHALT MIXTURES

WILL ACCEPT THE COMPACTION OF ASPHALT MIXTURES FURNISHED FOR DRIVING LANES AND RAMPS AT ONE INCH (25 MM) OR GREATER ON THIS PROJECT BY OPTION A ACCORDING TO SUBSECTIONS 402 AND 403 OF THE CURRENT STANDARD SPECIFICATIONS. USE JOINT CORES AS DESCRIBED IN SUBSECTION 402.03.02 FOR SURFACE MIXTURES ONLY. WILL ACCEPT THE COMPACTION OF ALL OTHER ASPHALT MIXTURES BY OPTION B.

455 EDGE KEY

THIS WORK INCLUDES CUTTING OUT THE EXISTING ASPHALT SURFACE TO A MINIMUM DEPTH AND WIDTH AS DETAILED ELSEWHERE IN THE PLANS SO THAT THE NEW SURFACE MAY HEEL INTO THE EXISTING SURFACE. THE CONTRACT UNIT PRICE BID LINEAR FOOT FOR "EDGE KEY" INCLUDES ALL NECESSARY MATERIALS, LABOR AND EQUIPMENT NECESSARY TO PERFORM THE WORK AND DISPOSE OF THE REMOVED ASPHALT MATERIAL.

555 JPC RIDE QUALITY

APPLY JPC PAVEMENT SMOOTHNESS REQUIREMENTS, IN ACCORDANCE WITH SUBSECTION 501.03.19 OF THE STANDARD SPECIFICATIONS, ON THIS PROJECT.

650 STANDARD DRAWINGS

STANDARD DRAWINGS ARE NOT ATTACHED TO THESE PLANS. A STANDARD DRAWING BOOK AND THE HEADWALL SUPPLEMENTAL BOOK MAY BE OBTAINED FROM THE POLICY SUPPORT BRANCH OF THE DEPARTMENT OF ADMINISTRATIVE SERVICES IN FRANKFORT, KY. AT (502)564-4610.

WORK AROUND POWER LINES

CONTRACTOR IS NOT TO OPERATE EQUIPMENT OR OTHERWISE WORK WITHIN A 20 FOOT ENVELOPE KENTUCKY UTILITIES TRANSMISSION LINES.

CONTRARY TO KYTC STANDARD DRAWING RBR-020-05 THE GUARDRAIL END TREATMENT ET-PLUS MANUFACTURED BY TRINITY INDUSTRIES WILL NOT BE PERMITTED AS AN OPTION FOR BID ITEM "GUARDRAIL END TREATMENT TYPE 1"

PROVIDE AND USE A MATERIAL TRANSFER VEHICLE ACCORDING TO SECTION 403.02.10 AND 403.03.05 OF THE KYTC STANDARD SPECIFICATIONS

CONTRACTOR SHALL COORDINATE WITH CONTRACTORS ON ADJACENT DEVELOPMENT PROJECTS AS NECESSARY AND ADJUST PLANS AS NEEDED WITH DIRECTION AND APPROVAL OF THE ENGINEER. THE EXISTING SURVEY INFORMATION INCLUDES THE PROPOSED DEVELOPMENT PLANS BUT NOT THE AS-BUILT INFORMATION. ANY ADDITIONAL SURVEYING OF THE AS-BUILT DEVELOPMENT CONSTRUCTION SHALL BE INCIDENTAL TO THE STAKING BID ITEM.

SPECIAL PROVISIONS AND NOTES

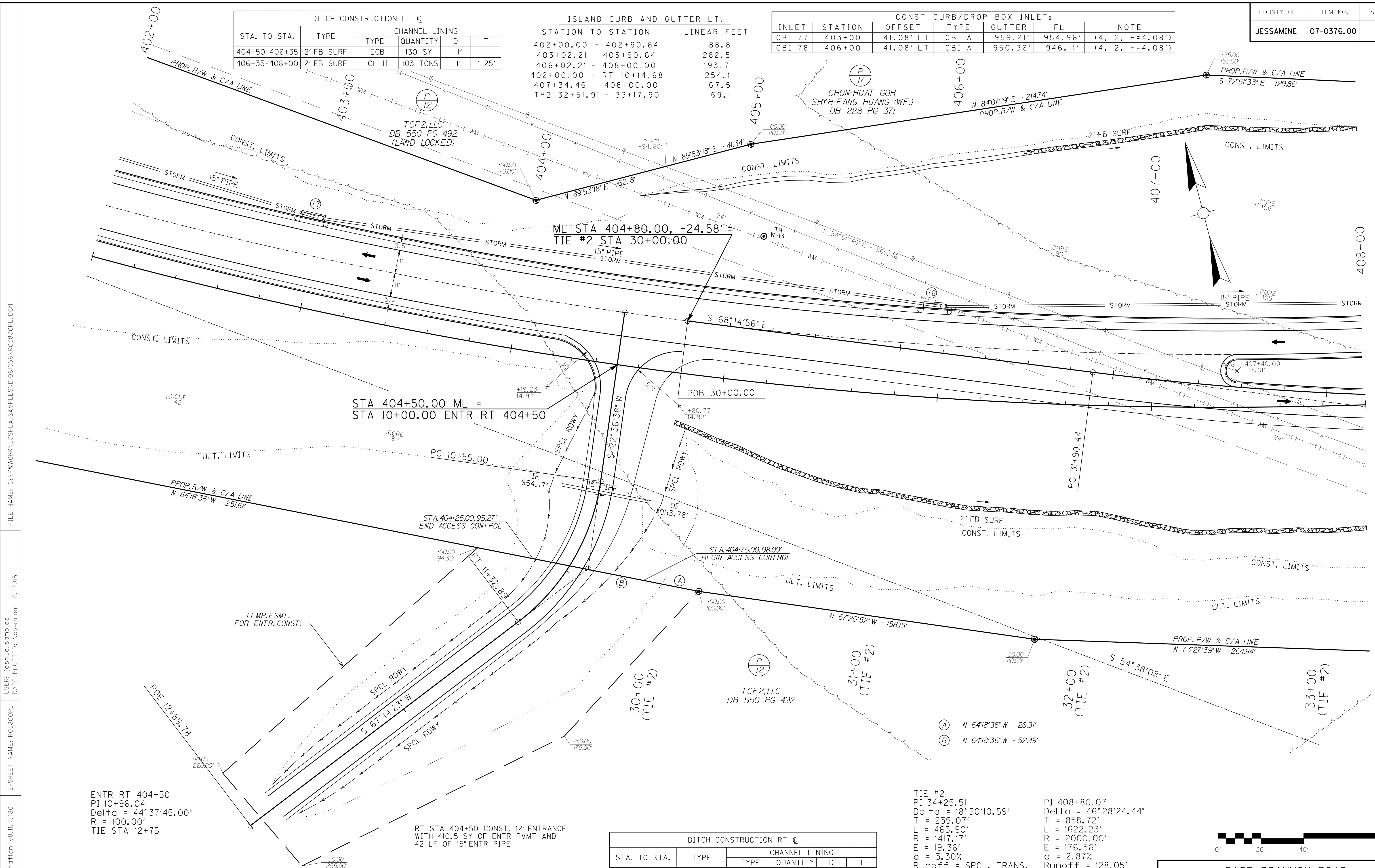
SPECIAL PROVISION 69 - SPECIAL PROVISION FOR EMBANKMENT AT BRIDGE END BENT STRUCTURES

SPECIAL NOTE MM - BARCODE LABEL ON PERMANENT SIGNS
 SPECIAL NOTE FOR INTELLIGENT COMPACTION FOR ASPHALT MIXTURES
 SPECIAL NOTE FOR INTELLIGENT COMPACTION FOR SOIL AND AGGREGATES
 SPECIAL NOTE FOR DOWEL BAR AND TIE BAR PLACEMENT IN JPC PAVEMENT
 SPECIAL NOTE FOR ALTERNATE PAVEMENT BID ADJUSTMENT

DITCH CONSTRUCTION LT @					
STA. TO STA.	TYPE	CHANNEL LINING			
		TYPE	QUANTITY	D	T
404+50-406+35	2' FB SURF	ECB	130 SY	1'	--
406+35-408+00	2' FB SURF	CL II	103 TONS	1'	1.25'

ISLAND CURB AND GUTTER LT.	
STATION TO STATION	LINEAR FEET
402+00.00 - 402+90.64	88.8
403+02.21 - 405+90.64	282.5
406+02.21 - 408+00.00	193.7
402+00.00 - RT 10+14.68	254.1
407+34.46 - 408+00.00	67.5
T#2 32+51.91 - 33+17.90	69.1

CONST CURB/DROP BOX INLET:						
INLET	STATION	OFFSET	TYPE	GUTTER	FL	NOTE
CBI 77	403+00	41.08' LT	CBI A	959.21'	954.96'	(4, 2, H=4.08')
CBI 78	406+00	41.08' LT	CBI A	950.36'	946.11'	(4, 2, H=4.08')



ENTR RT 404+50
 PI 10+96.04
 Delta = 44° 37' 45.00"
 R = 100.00'
 TIE STA 12+75

RT STA 404+50 CONST. 12' ENTRANCE
 WITH 40.5 SY OF ENTR PVMT AND
 42 LF OF 15" ENTR PIPE

DITCH CONSTRUCTION RT @					
STA. TO STA.	TYPE	CHANNEL LINING			
		TYPE	QUANTITY	D	T
T#2 30+00-33+18	2' FB SURF	CL II	217 TONS	1'	1.25'

TIE #2
 PI 34+25.51
 Delta = 18° 50' 10.59"
 T = 235.07'
 L = 465.90'
 R = 1417.17'
 E = 19.36'
 e = 3.30%
 Runoff = SPCL. TRANS.
 Runout = SEE X-SECTS

PI 408+80.07
 Delta = 46° 28' 24.44"
 T = 858.72'
 L = 1622.23'
 R = 2000.00'
 E = 176.56'
 e = 2.87%
 Runoff = 128.05'
 Runout = 89.33'



EAST BRANNON ROAD
 STA. 402+00 TO STA. 408+00
 PLAN SHEET

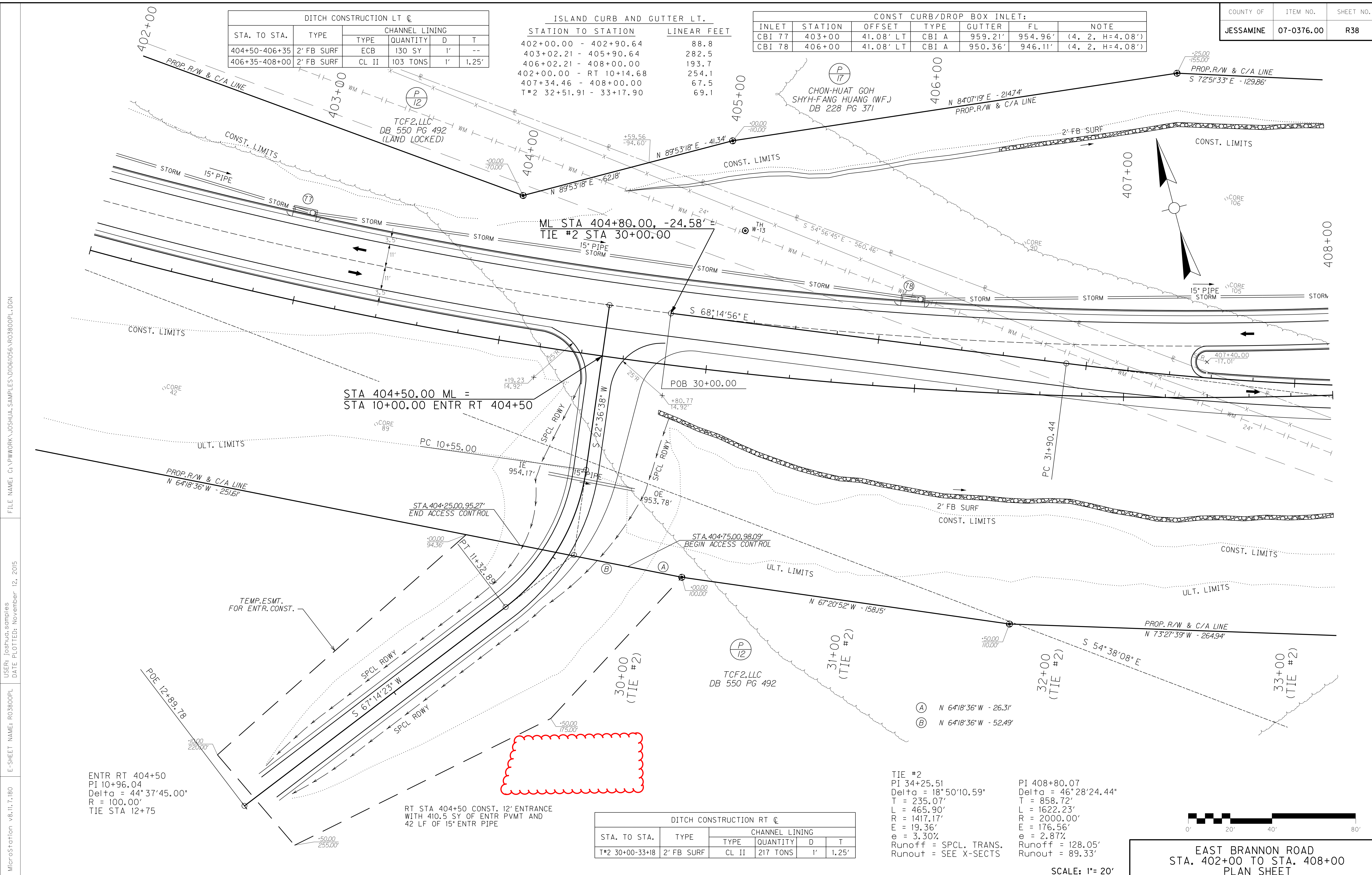
SCALE: 1" = 20'

FILE NAME: C:\PWORK\JOSHUA\SAMPLES\061056\R03800PL.DGN
 USER: joshua.samples
 DATE PLOTTED: November 12, 2015
 E-SHEET NAME: R03800PL
 MicroStation v8.11.7.180

DITCH CONSTRUCTION LT @					
STA. TO STA.	TYPE	CHANNEL LINING			
		TYPE	QUANTITY	D	T
404+50-406+35	2' FB SURF	ECB	130 SY	1'	--
406+35-408+00	2' FB SURF	CL II	103 TONS	1'	1.25'

ISLAND CURB AND GUTTER LT.	
STATION TO STATION	LINEAR FEET
402+00.00 - 402+90.64	88.8
403+02.21 - 405+90.64	282.5
406+02.21 - 408+00.00	193.7
402+00.00 - RT 10+14.68	254.1
407+34.46 - 408+00.00	67.5
T#2 32+51.91 - 33+17.90	69.1

CONST CURB/DROP BOX INLET:						
INLET	STATION	OFFSET	TYPE	GUTTER	FL	NOTE
CBI 77	403+00	41.08' LT	CBI A	959.21'	954.96'	(4, 2, H=4.08')
CBI 78	406+00	41.08' LT	CBI A	950.36'	946.11'	(4, 2, H=4.08')



STA 404+50.00 ML =
STA 10+00.00 ENTR RT 404+50

ML STA 404+80.00, -24.58'
TIE #2 STA 30+00.00

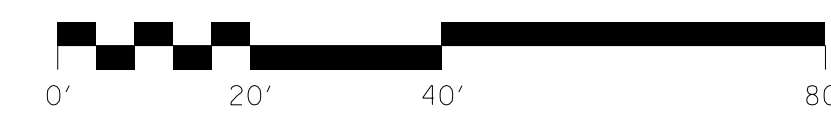
ENTR RT 404+50
PI 10+96.04
Delta = 44° 37' 45.00"
R = 100.00'
TIE STA 12+75

RT STA 404+50 CONST. 12' ENTRANCE
WITH 40.5 SY OF ENTR PVMT AND
42 LF OF 15" ENTR PIPE

DITCH CONSTRUCTION RT @					
STA. TO STA.	TYPE	CHANNEL LINING			
		TYPE	QUANTITY	D	T
T#2 30+00-33+18	2' FB SURF	CL II	217 TONS	1'	1.25'

TIE #2
PI 34+25.51
Delta = 18° 50' 10.59"
T = 235.07'
L = 465.90'
R = 1417.17'
E = 19.36'
e = 3.30%
Runoff = SPCL. TRANS.
Runout = SEE X-SECTS

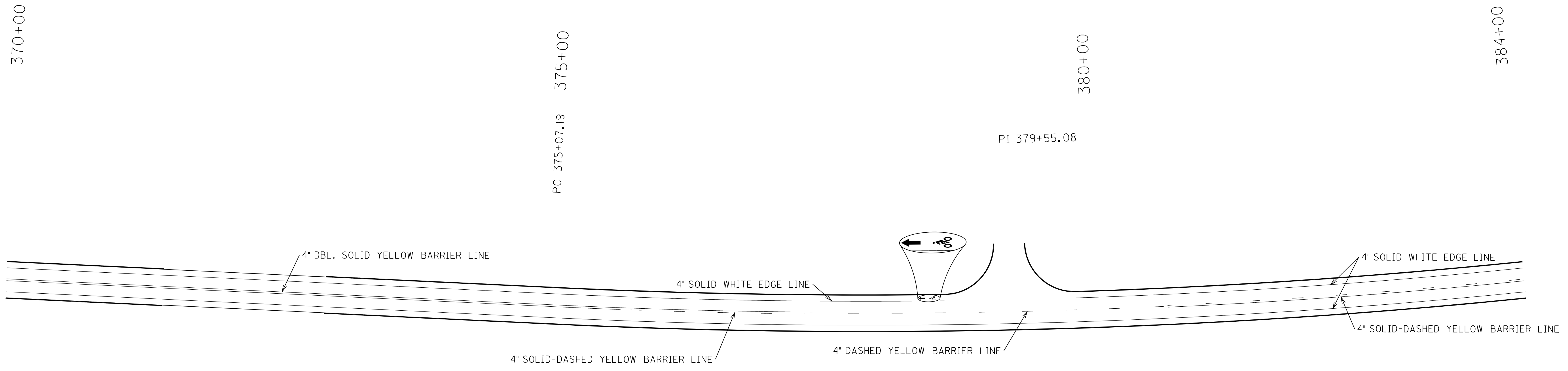
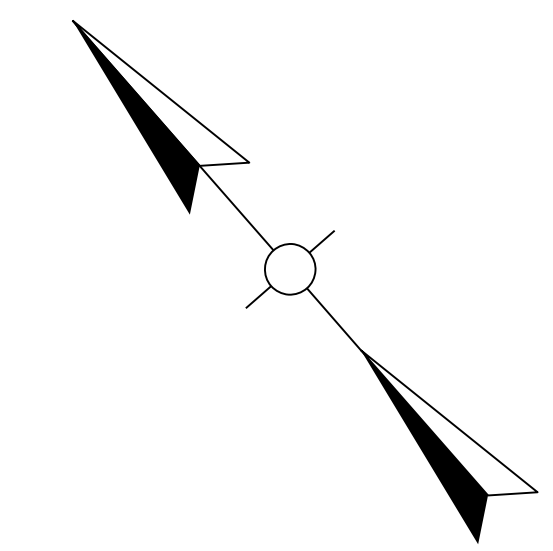
PI 408+80.07
Delta = 46° 28' 24.44"
T = 858.72'
L = 1622.23'
R = 2000.00'
E = 176.56'
e = 2.87%
Runoff = 128.05'
Runout = 89.33'



EAST BRANNON ROAD
STA. 402+00 TO STA. 408+00
PLAN SHEET

SCALE: 1" = 20'

FILE NAME: C:\PWORK\JOSHUA\SAMPLES\061056\R03800PL.DGN
 USER: joshua.samples
 DATE PLOTTED: November 12, 2015
 E-SHEET NAME: R03800PL
 MicroStation v8.11.7.180



ITEM	QUANTITY	UNITS
4" SOLID WHITE EDGE LINE	2,672	FT
4" DBL. SOLID YELLOW BARRIER LINE	565	FT
4" SOLID-DASHED YELLOW BARRIER LINE	503	FT
4" DASHED YELLOW BARRIER LINE	329	FT
THRU ARROW (PRE THERM)	1	EA
BICYCLE (PRE THERM)	1	EA

FILE NAME: C:\PWORK\TYLER\MILLS\10101056\RI020005.DGN

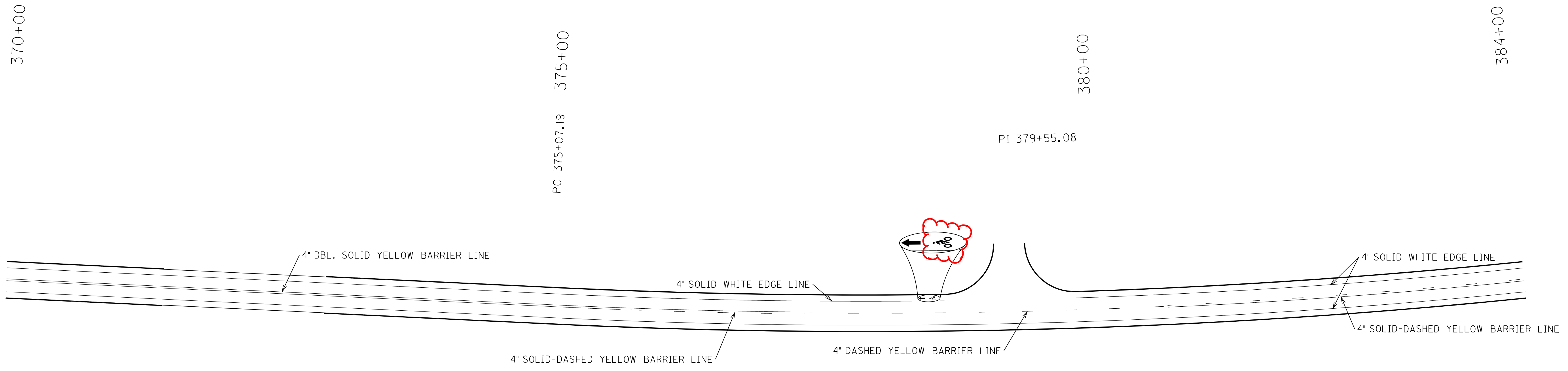
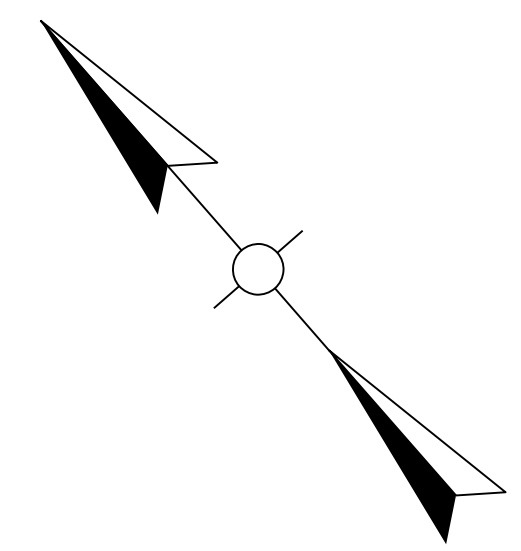
USER: Tyler, mills
DATE PLOTTED: November 13, 2015

E-SHEET NAME: RI020005

MicroStation v8.11.7.443

SCALE: 1"= 50'

PAVEMENT STRIPING PLAN
STA. 370+00 TO STA. 384+00



ITEM	QUANTITY	UNITS
4" SOLID WHITE EDGE LINE	2,672	FT
4" DBL. SOLID YELLOW BARRIER LINE	565	FT
4" SOLID-DASHED YELLOW BARRIER LINE	503	FT
4" DASHED YELLOW BARRIER LINE	329	FT
THRU ARROW (PRE THERM)	1	EA
BICYCLE (PRE THERM)	1	EA

FILE NAME: C:\PWORK\TYLER\MILLS\10101056\RI020005.DGN

USER: tyler,mills
DATE PLOTTED: November 13, 2015

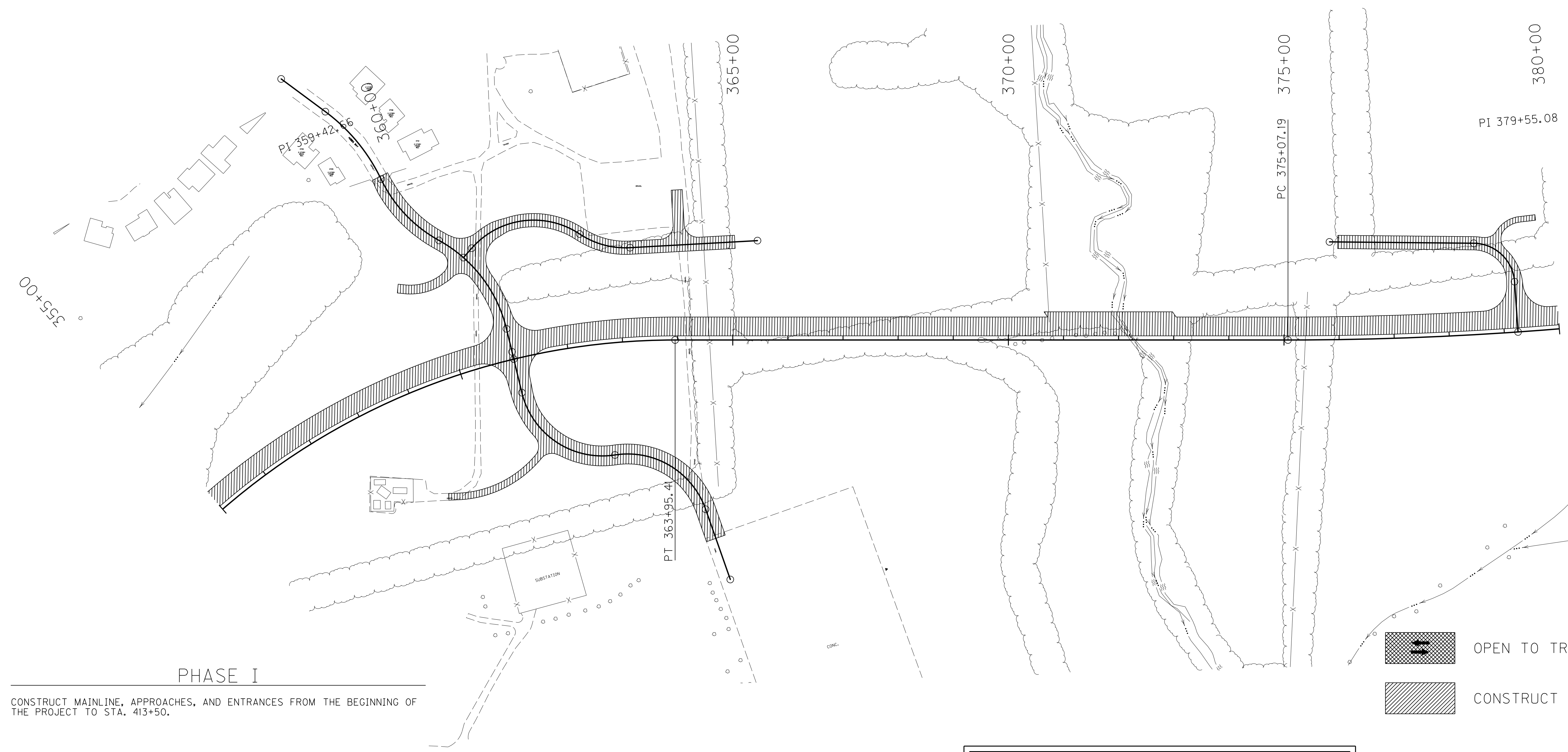
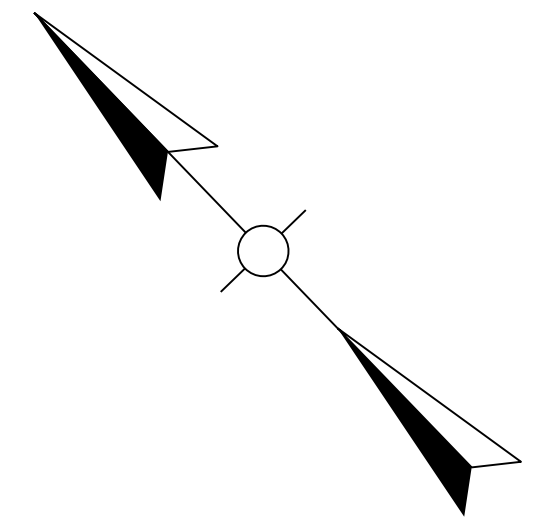
E-SHEET NAME: RI020005

MicroStation v8.11.7.443

SCALE: 1"= 50'

PAVEMENT STRIPING PLAN
STA. 370+00 TO STA. 384+00

COUNTY OF	ITEM NO.	SHEET NO.
JESSAMINE	07-0376.00	RI09

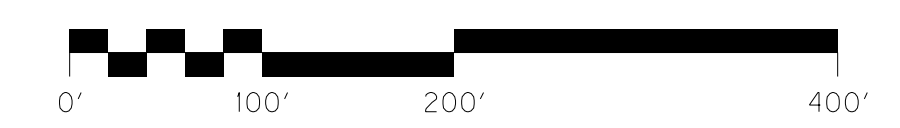


PHASE I

CONSTRUCT MAINLINE, APPROACHES, AND ENTRANCES FROM THE BEGINNING OF THE PROJECT TO STA. 413+50.

- OPEN TO TRAFFIC THIS PHASE
- CONSTRUCT THIS PHASE

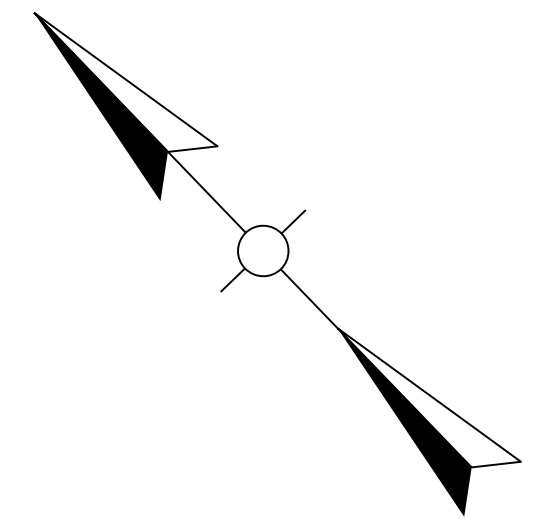
FOR MAINTENANCE OF TRAFFIC ONLY



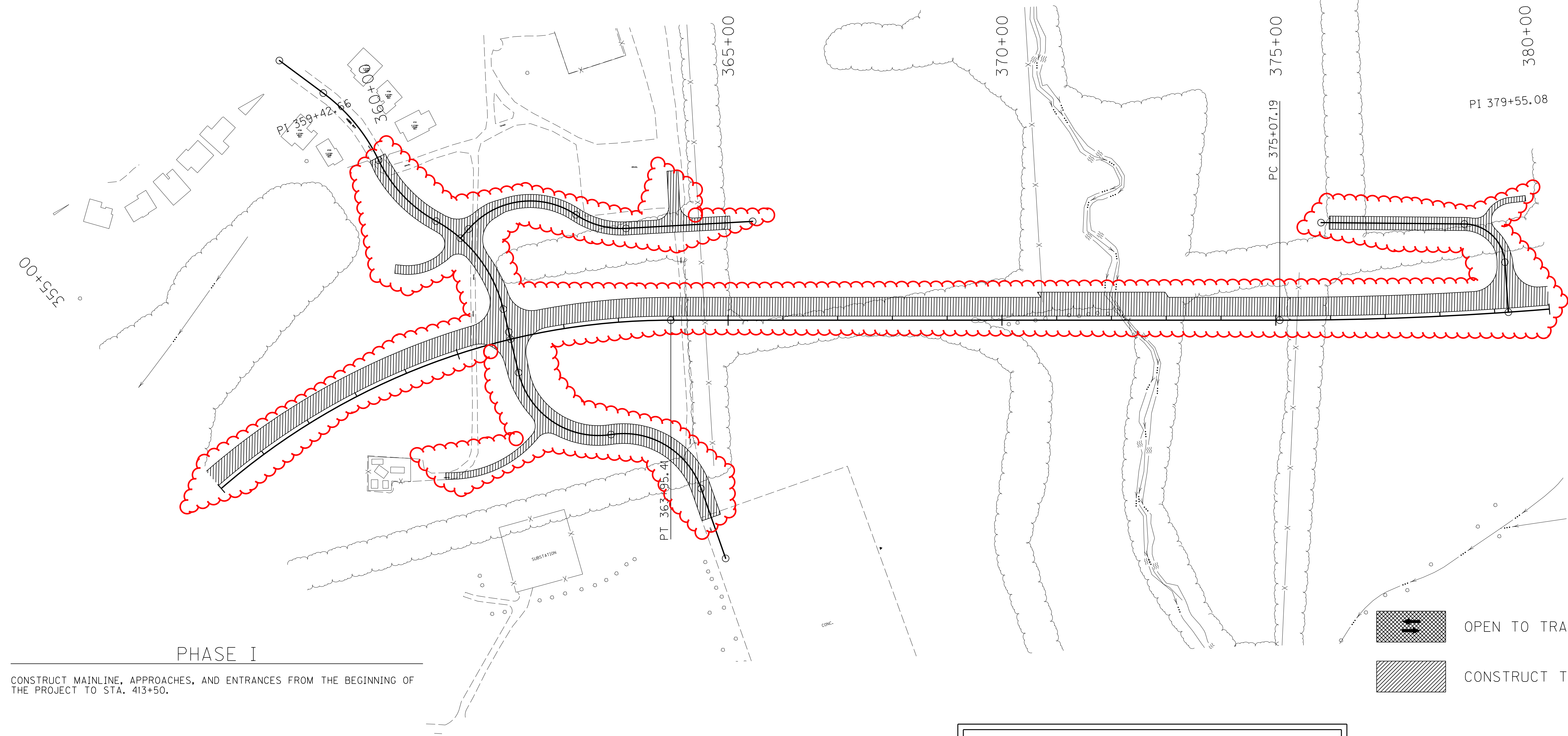
SCALE: 1"=100'

MAINTENANCE OF TRAFFIC
PHASE I
SHEET 3 OF 5

MicroStation v8.11.7.180 | E-SHEET NAME: RI0900MT | USER: Tyler, mills | DATE PLOTTED: November 13, 2015 | FILE NAME: G:\PWORK\TYLER\MILLS\DI061056\RI0900MT.DGN



FILE NAME: G:\PWORK\TYLER\MILLS\10101056\RI0900MT.DGN
 USER: Tyler, mills
 DATE PLOTTED: November 13, 2015
 E-SHEET NAME: RI0900MT
 MicroStation v8.11.7.180



PHASE I

CONSTRUCT MAINLINE, APPROACHES, AND ENTRANCES FROM THE BEGINNING OF THE PROJECT TO STA. 413+50.

- OPEN TO TRAFFIC THIS PHASE
- CONSTRUCT THIS PHASE

FOR MAINTENANCE OF TRAFFIC ONLY



SCALE: 1"=100'

COUNTY OF	ITEM NO.	SHEET NO.
JESSAMINE	07-0376.00	R151

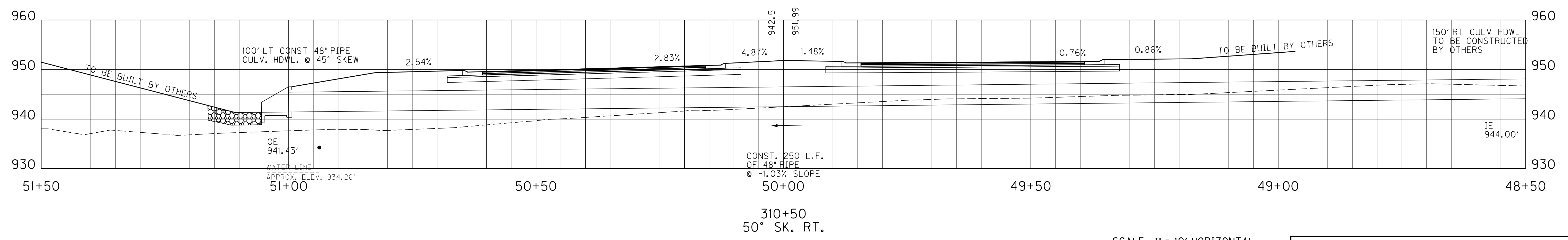
COVER HEIGHT	DESIGN PH LEVEL	CULVERT PIPE 48 INCH	PIPE CULVERT HDWL 48 INCH EACH	CL III CHANNEL LINING	DITCH EXC
FT		LIN FT		TONS	CY
1.6	M	250	1		

FILE NAME: C:\PWORK\JOSHUA\SAMPLES\061056\R15100PD.DGN

USER: joshua.samples
DATE PLOTTED: November 12, 2015

E-SHEET NAME: R14800PD

MicroStation v8.11.7.443



SCALE: 1" = 10' HORIZONTAL
1" = 10' VERTICAL

PIPE SECTIONS
STA. 310+50
CULVERT SECTION

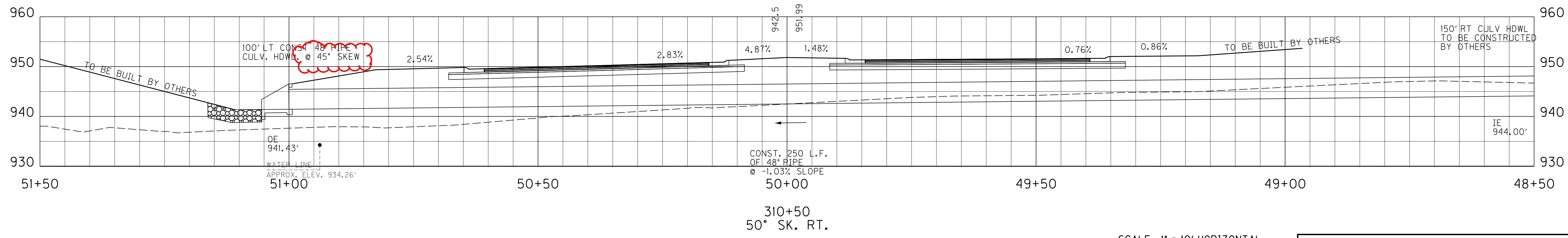
COVER HEIGHT FT	DESIGN PH LEVEL	CULVERT PIPE 48 INCH LIN FT	PIPE CULVERT HDWL 48 INCH EACH	CL III CHANNEL LINING TONS	DITCH EXC CY
1.6	M	250	1		

FILE NAME: C:\PWORK\JOSHUA\SAMPLES\061056\R15100PD.DGN

USER: Joshua.samples
DATE PLOTTED: November 12, 2015

E-SHEET NAME: R14800PD

MicroStation v8.11.7.443



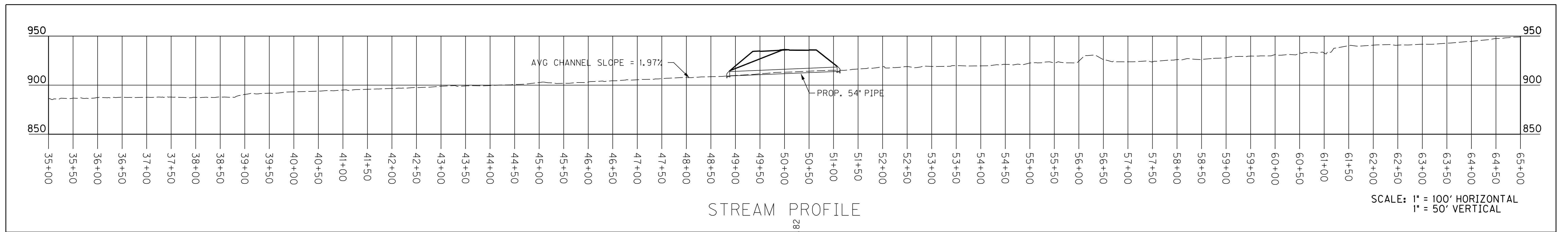
SCALE: 1" = 10' HORIZONTAL
1" = 10' VERTICAL

PIPE SECTIONS
STA. 310+50
CULVERT SECTION

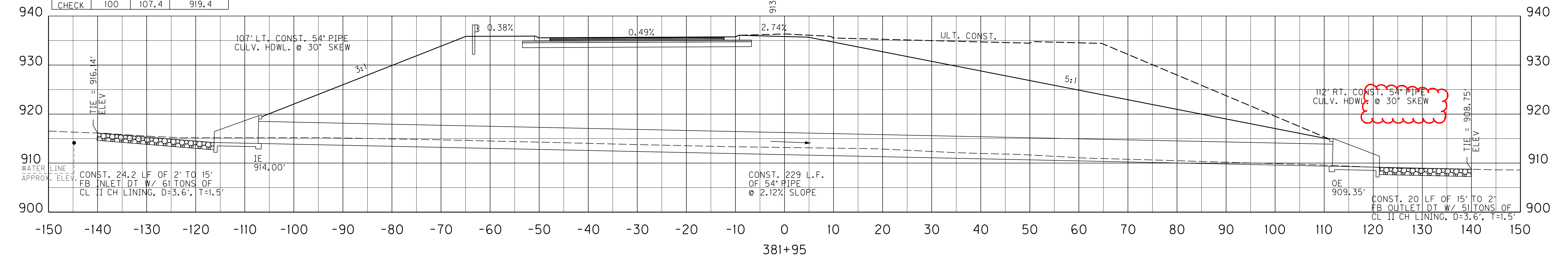
COUNTY OF	ITEM NO.	SHEET NO.
JESSAMINE	07-0376.00	R153
EAST BRANNON ROAD CULVERT SECTION		
MAINLINE STA. 381+95		
CONST. 229 LIN. FT. OF 54" PIPE @ 35° SK. RT.		

COVER HEIGHT	DESIGN PH LEVEL	CULVERT PIPE 54 INCH	PIPE CULVERT HDWL 54 INCH EACH	CL II CHANNEL LINING	DITCH EXC
FT		LIN FT		TONS	CY
18.3	M	229	2	112	38

FILE NAME: G:\PWORK\JOSHUA\SAMPLES\061056\RI5300PD.DGN
 USER: Joshua.samples
 DATE PLOTTED: November 12, 2015
 E-SHEET NAME: RI5300PD
 MicroStation v8.11.7.443



FLOOD DATA			
	STORM (YR)	RUNOFF (cfs)	HEADWATER ELEV (ft)
DESIGN	25	90.9	918.7
CHECK	100	107.4	919.4

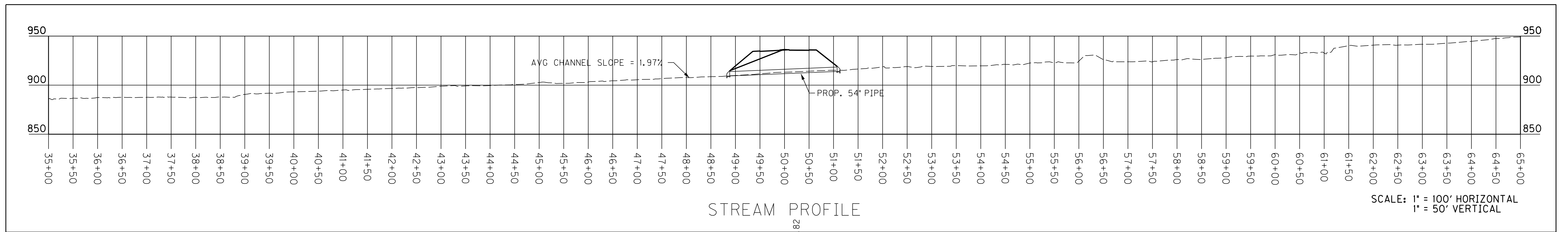


CONST. 24.2 LF OF 2' TO 15' FB INLET DT W/ 61 TONS OF CL II CH LINING, D=3.6', T=1.5'
 CONST. 229 L.F. OF 54" PIPE @ 2.12% SLOPE
 CONST. 20 LF OF 15' TO 21' FB OUTLET DT W/ 51 TONS OF CL II CH LINING, D=3.6', T=1.5'

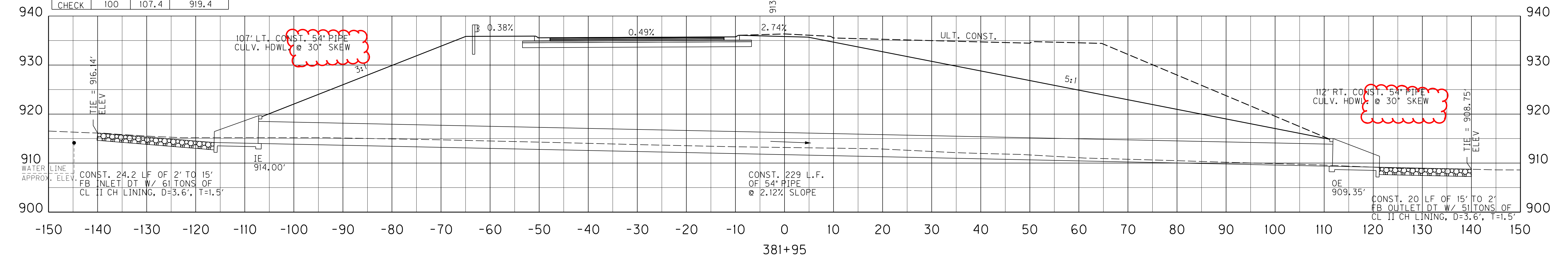
COUNTY OF	ITEM NO.	SHEET NO.
JESSAMINE	07-0376.00	R153
EAST BRANNON ROAD CULVERT SECTION		
MAINLINE STA. 381+95		
CONST. 229 LIN. FT. OF 54" PIPE @ 35° SK. RT.		

COVER HEIGHT	DESIGN PH LEVEL	CULVERT PIPE 54 INCH	PIPE CULVERT HDWL 54 INCH EACH	CL II CHANNEL LINING	DITCH EXC
FT		LIN FT		TONS	CY
18.3	M	229	2	112	38

FILE NAME: G:\PWORK\JOSHUA\SAMPLES\061056\RI5300PD.DGN
 USER: Joshua.samples
 DATE PLOTTED: November 12, 2015
 E-SHEET NAME: RI5300PD
 MicroStation v8.11.7.443



FLOOD DATA			
	STORM (YR)	RUNOFF (cfs)	HEADWATER ELEV (ft)
DESIGN	25	90.9	918.7
CHECK	100	107.4	919.4



COUNTY OF	ITEM NO.	SHEET NO.
JESSAMINE	07-0376.00	R156

COVER HEIGHT	DESIGN PH LEVEL	CULVERT PIPE 30 INCH	PIPE CULVERT HDWL 30 INCH EACH
FT		LIN FT	
7.1	M	155	2

CL II CHANNEL LINING	DITCH EXC
TONS	CY
32	20

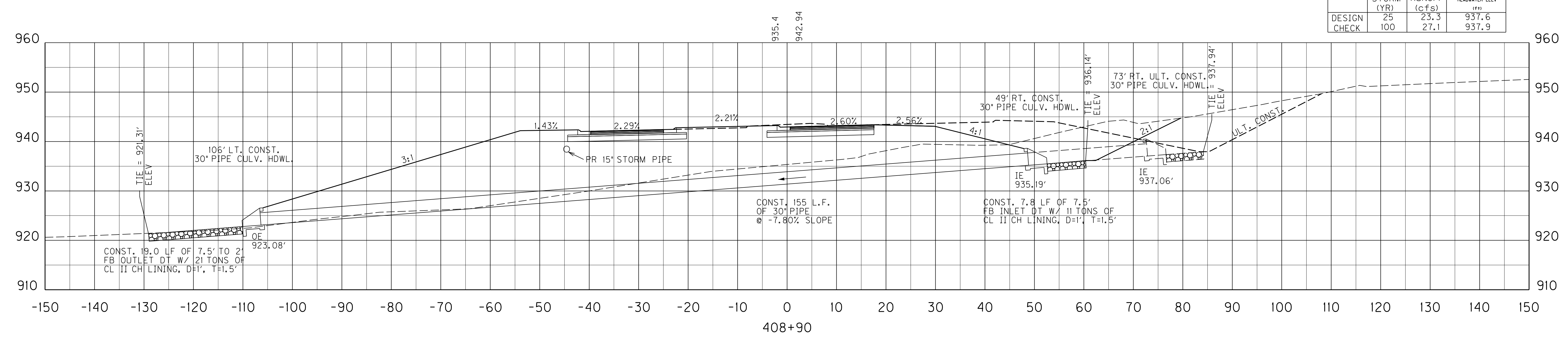
FILE NAME: C:\PWORK\JOSHUA\SAMPLES\061056\R15600PD.DGN

USER: Joshua.samples
DATE PLOTTED: November 12, 2015

E-SHEET NAME: R15600PD

MicroStation v8.11.7.443

	STORM (YR)	RUNOFF (cfs)	HEADWATER ELEV (ft)
DESIGN	25	23.3	937.6
CHECK	100	27.1	937.9



SCALE: 1" = HORIZONTAL
1" = VERTICAL

PIPE SECTIONS
STA. 408+90

COUNTY OF	ITEM NO.	SHEET NO.
JESSAMINE	07-0376.00	R156

COVER HEIGHT	DESIGN PH LEVEL	CULVERT PIPE 30 INCH	PIPE CULVERT HDWL 30 INCH EACH
FT		LIN FT	
7.1	M	155	2

CL II CHANNEL LINING	DITCH EXC
TONS	CY
32	20

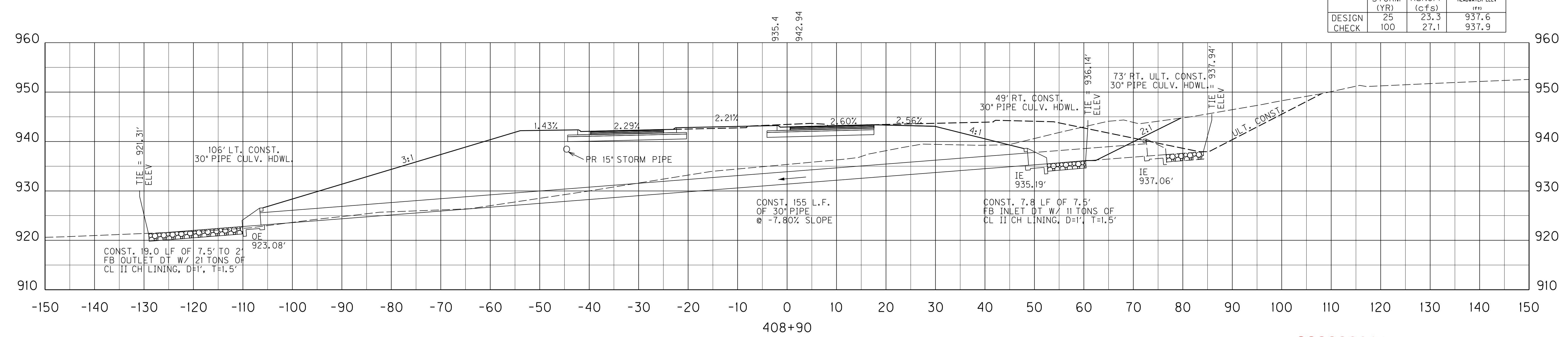
FILE NAME: C:\PWORK\JOSHUA\SAMPLES\061056\R15600PD.DGN

USER: Joshua.samples
DATE PLOTTED: November 12, 2015

E-SHEET NAME: R15600PD

MicroStation v8.11.7.443

FLOOD DATA			
	STORM (YR)	RUNOFF (cfs)	HEADWATER ELEV (ft)
DESIGN	25	23.3	937.6
CHECK	100	27.1	937.9



SCALE: 1" = 1" HORIZONTAL
1" = 1" VERTICAL

PIPE SECTIONS
STA. 408+90

COUNTY OF	ITEM NO.	SHEET NO.
JESSAMINE	07-376.00	R157

COVER HEIGHT	DESIGN PH LEVEL	CULVERT PIPE 48 INCH	PIPE CULVERT HDWL 48 INCH EACH
FT		LIN FT	
8.6	M	185	2

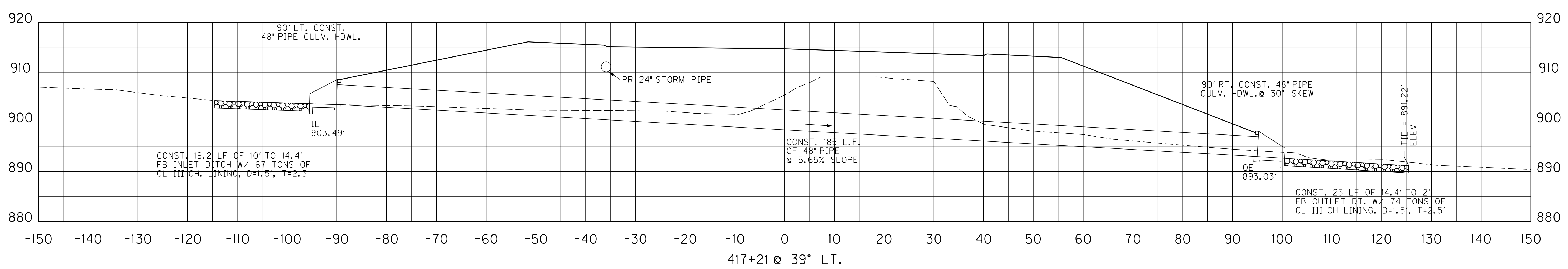
CL III CHANNEL LINING	DITCH EXC
TONS	CY
141	125

FILE NAME: C:\PWORK\JOSHUA\SAMPLES\061056\R15700PD.DGN

USER: Joshua.samples
DATE PLOTTED: November 12, 2015

E-SHEET NAME: R15700PD

MicroStation v8.11.7.443



SCALE: 1" = 10' HORIZONTAL
1" = 10' VERTICAL

PIPE SECTIONS
STA. 417+21 @ 39° LT.

COUNTY OF	ITEM NO.	SHEET NO.
JESSAMINE	07-376.00	R157

COVER HEIGHT	DESIGN PH LEVEL	CULVERT PIPE 48 INCH LIN FT	PIPE CULVERT HDWL 48 INCH EACH
8.6	M	185	2

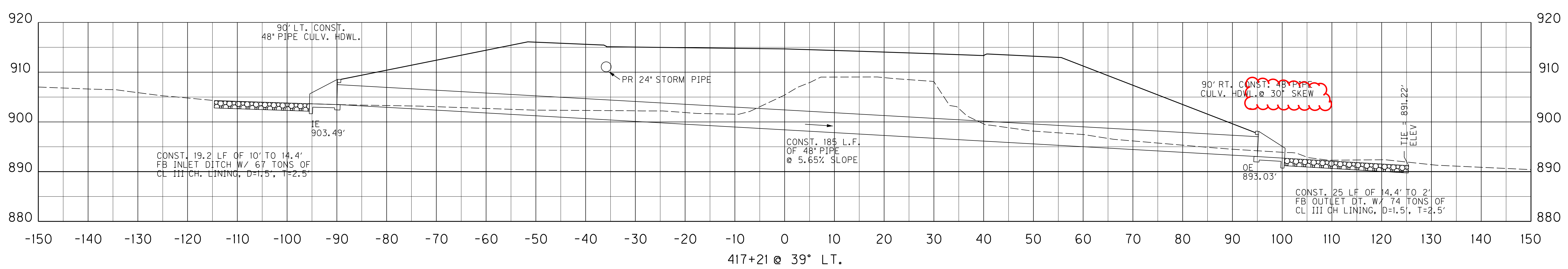
CL III CHANNEL LINING	DITCH EXC
TONS	CY
141	125

FILE NAME: C:\PWORK\JOSHUA\SAMPLES\061056\R15700PD.DGN

USER: Joshua.samples
DATE PLOTTED: November 12, 2015

E-SHEET NAME: R15700PD

MicroStation v8.11.7.443



PIPE SECTIONS
STA. 417+21 @ 39° LT.

SCALE: 1"=20' HORIZ.
1"=20' VERT.

COUNTY OF	ITEM NO.	SHEET NO.
JESSAMINE	07-0376.00	R201

PIPE
CULVERT
HDWL
30 INCH
EACH

STORM
SEWER
PIPE
30 INCH
LIN FT

CURB BOX
INLET
TYPE A
EACH

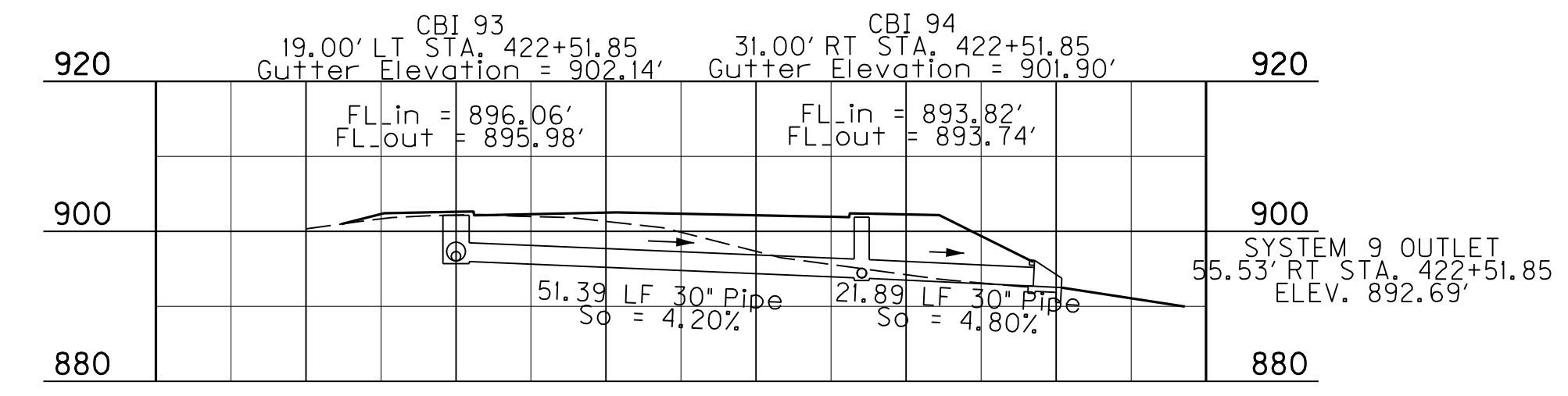
CL III
CHANNEL
LINING
TONS

1

73.28

2

11



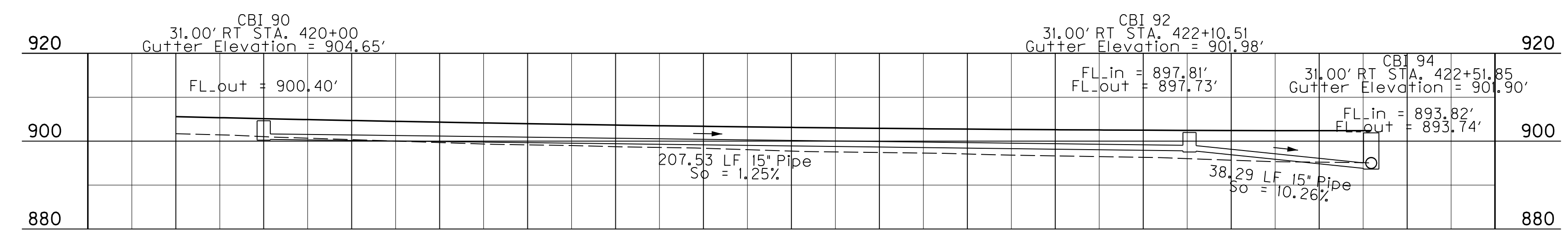
STORM SEWER SYSTEM 9 PROFILE
CBI 93 TO OUTLET

STORM
SEWER
PIPE
15 INCH
LIN FT

CURB BOX
INLET
TYPE A
EACH

245.82

2



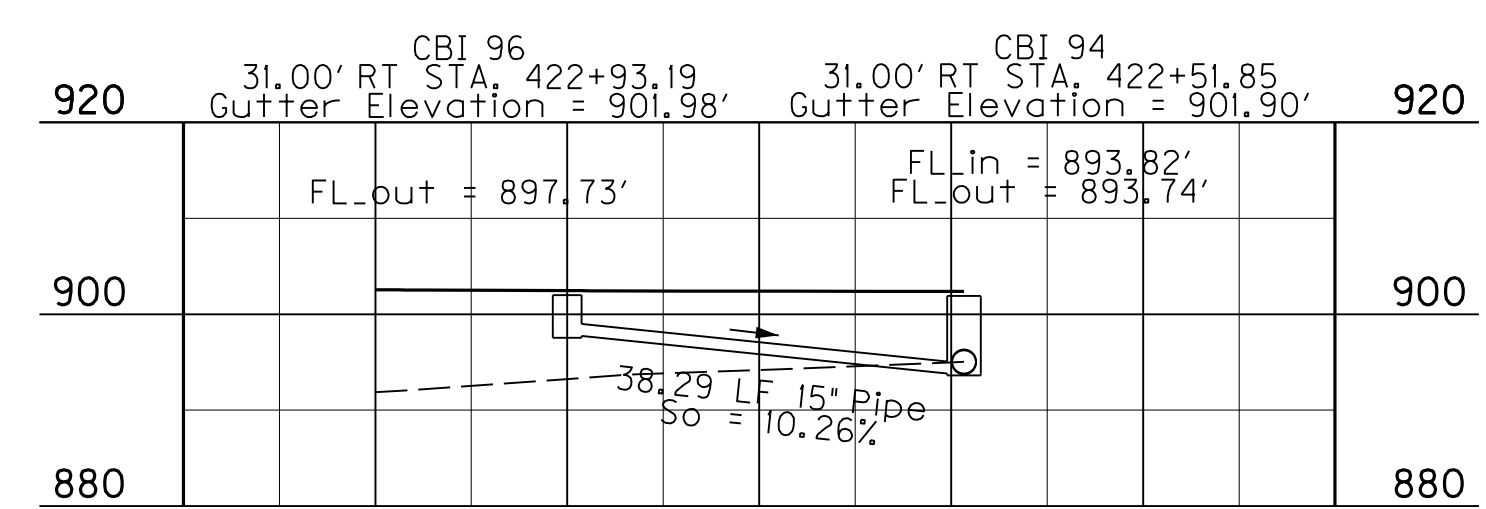
STORM SEWER SYSTEM 9 PROFILE
CBI 90 TO CBI 94

STORM
SEWER
PIPE
15 INCH
LIN FT

CURB BOX
INLET
TYPE A
EACH

38.29

1



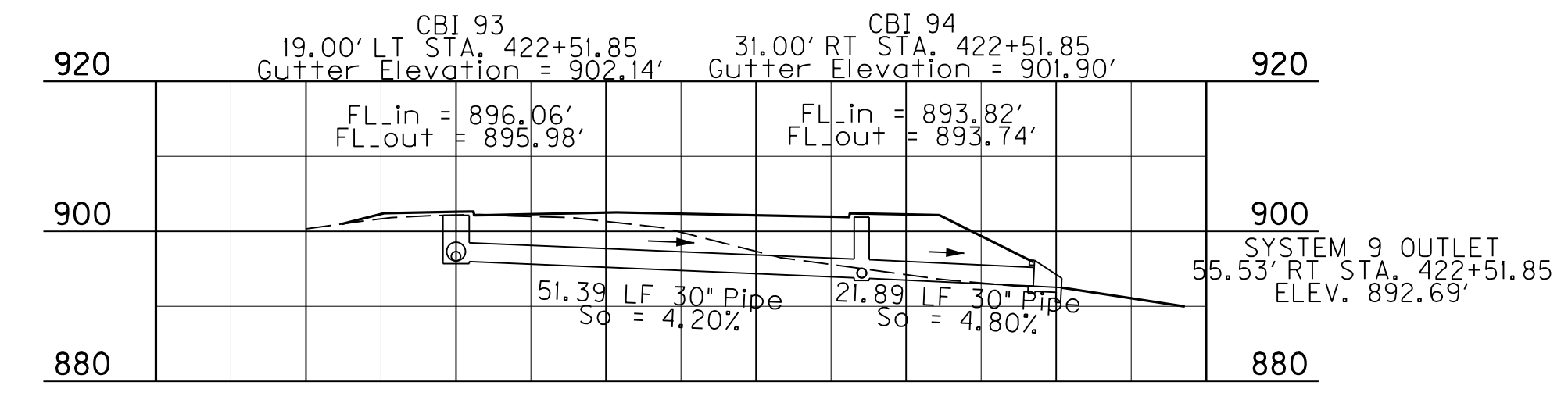
STORM SEWER SYSTEM 9 PROFILE
CBI 96 TO CBI 94

FILE NAME: G:\PWORK\TYLER\MILLS\DI061056\AR20100PD.DGN
 USER: c:\m\ton.smith
 DATE PLOTTED: November 13, 2015
 E-SHEET NAME: R20100PD
 MicroStation v8.11.7.443

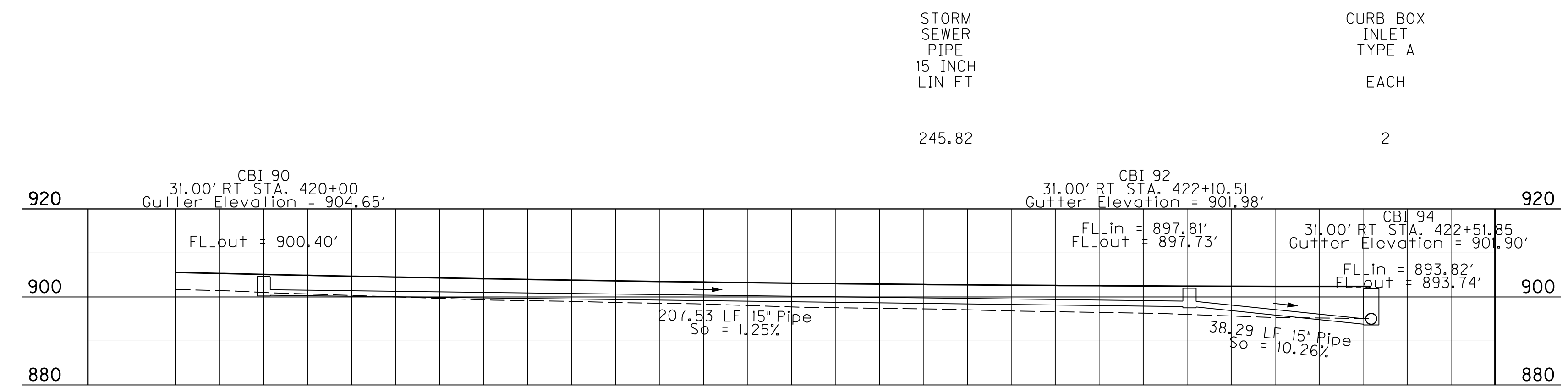
SCALE: 1"=20' HORIZ.
1"=20' VERT.

COUNTY OF	ITEM NO.	SHEET NO.
JESSAMINE	07-0376.00	R201

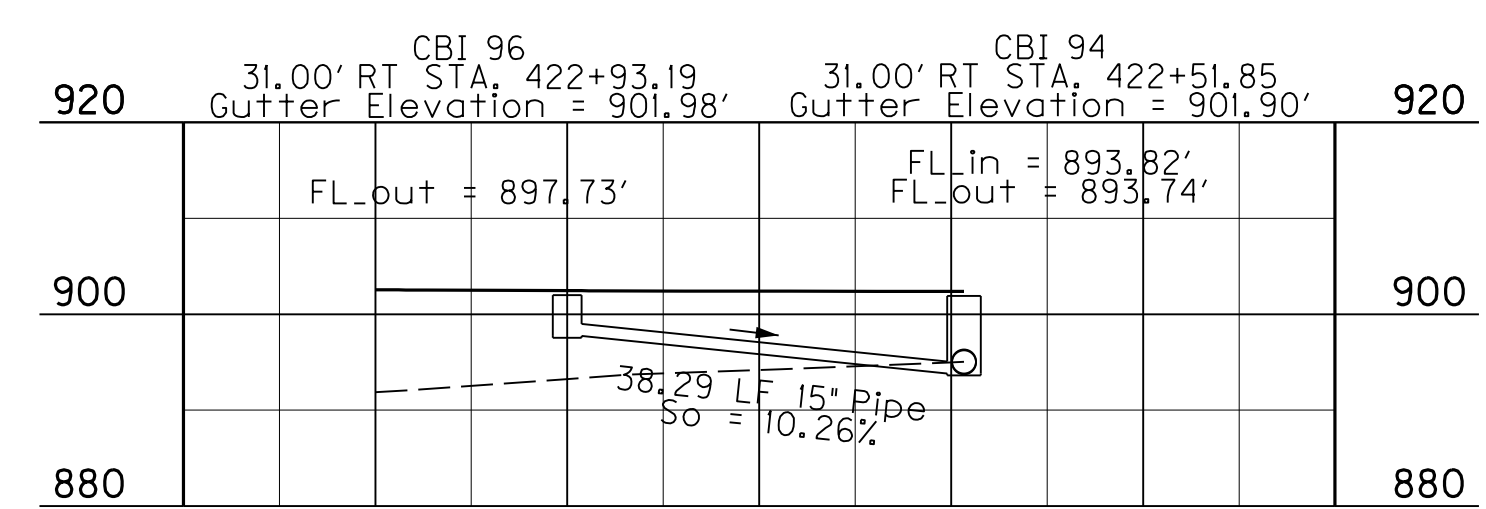
PIPE CULVERT HDWL 30 INCH EACH	1	STORM SEWER PIPE 30 INCH LIN FT	73.28	CURB BOX INLET TYPE A EACH	2	CL III CHANNEL LINING TONS	11
--	---	---	-------	-------------------------------------	---	-------------------------------------	----



STORM SEWER SYSTEM 9 PROFILE
CBI 93 TO OUTLET



STORM SEWER SYSTEM 9 PROFILE
CBI 90 TO CBI 94



STORM SEWER SYSTEM 9 PROFILE
CBI 96 TO CBI 94

FILE NAME: G:\PWORK\TYLER\MILLS\DI061056\AR20100PD.DGN
 USER: c:\m\ton.smith
 DATE PLOTTED: November 13, 2015
 E-SHEET NAME: R20100PD
 MicroStation v8.11.7.443

11/13/15

**Brannon Road Extension, Jessamine County
Item Number: 7-0376.00**

**SPECIAL NOTE
ALTERNATE PAVEMENT BID ADJUSTMENT**

This project includes alternate bidding for asphalt or concrete pavement. There are specific items listed for each pavement type to be bid with the alternate selected by the Contractor. There is also a line item in the alternate categories for each alternate to adjust for the projected out-year life-cycle costs to the Cabinet. These line item adjustments are as follows:

Asphalt Pavement Adjustment = **\$328,205**

Concrete Pavement Adjustment = **\$221,543**

The amount reflective of the pavement type selected by each contractor will be added to their respective bid for comparison of the low bid. The adjustment ***shall be used only for determination of the lowest bidder and shall not be used to determine the final payment*** to the contractor when the project is completed.

Please note that these adjustments should not be used for the calculation of the maximum Mobilization amount and are not required to be included in the minimum Demobilization amount.

Proposal Guaranty

As a supplement to Section 102 of the Standard Specifications, it will not be necessary for the Proposal Guaranty to include an amount necessary to cover the amount of the bid adjustment.

**SPECIAL NOTE FOR DOWEL BAR AND TIE BAR PLACEMENT IN JPC
 PAVEMENT**

This Special Note will apply where indicated on the plans or in the proposal. Section references herein are to the Department’s current Standard Specifications for Road and Bridge Construction.

1.0 DESCRIPTION. This Special Note applies when new JPC pavement is placed on a project. Allowable tolerances are outlined for both dowel bar and tie bar placement in driving lanes and shoulders. Concrete patches will not be tested under this special note unless they are required as corrective work under subsection 3.1. Testing applies to all joints except that transverse joints in the shoulders will not be tested. *Working with concrete requires at least seven days or more of curing time. The concrete should be dry for at least 24 hrs prior to testing.*

This Special Note specifies the allowable tolerances for placement of dowel bars and tie bars in JPC pavement.

2.0 MATERIALS. Conform to Subsection 501 or 502 of the current Standard Specifications. Consistent with Standard Drawing RPS-020-13, dowel baskets will be manufactured with the mid-point of the dowel bar at T/2.

3.0 CONSTRUCTION.

3.1 Dowel Bars. Transverse dowel bars, which are generally in baskets, should be located in the center of the slab vertically. They should not be skewed or rotated. Contrary to Section 501 of the Standard Specification and Standard Drawing RPS-020-13, place dowel bars to the tolerances shown in the table below.

Dimension	Tolerance
Horizontal offset	± 1 inch
Longitudinal translation	± 3 inches
Horizontal skew	½ inch, max
Vertical skew	½ inch, max
Vertical depth	<p>The minimum distance below the concrete pavement surface must be: $DB = T/3 + 1/2$ inch</p> <p>Where: DB = vertical distance in inches, measured from the concrete pavement surface to any point along the top of dowel bar; and T = actual concrete pavement thickness at joint location, in inches.</p> <p>The maximum distance below the surface to any point along the dowel bar should be $2T/3$.</p>

Dowel bars determined to be out of tolerance are to be marked in the field with marking paint. Corrective work will be required for the following circumstances:

- if 3 or more bars are higher than $T/3 + \frac{1}{2}$ inch from the top of the slab or lower than $2T/3$ (as measured from the top) for the bottom of the slab
- if 3 or more bars are translated longitudinally 3 inches or more
- if more than two consecutive joints have any bars that are skewed vertically or horizontally

Any corrective work shall be completed in accordance with the current special note 11J – Special Note for Full Depth Concrete Pavement Repair. Contrary to Special Note 11J, all joint repairs completed due to corrective work shall be sealed with silicone rubber unless approved by the Engineer.

3.2 Tie Bars. Install tie bars at a depth equal to $\frac{1}{2}$ of the slab thickness. Tie bars shall be perpendicular to the longitudinal joint and parallel with the concrete pavement surface. Installation shall be to the tolerances outlined below.

- Not less than $\frac{1}{2}$ inch below the saw cut depth of the joints
- 2" clearance from the tie bar and bottom of pavement

Corrective action will be required for the following circumstances:

- 2 consecutive tie bars are missing or outside of the tolerance listed above
- 4 or more bars in a slab are missing or outside of the tolerances listed (does not have to be consecutive)

The correction shall be made by cross stitching to place the new tie bars accordingly.

4.0 MEASUREMENT

4.1 Testing Limits. All driving lanes requiring load transfer assemblies will be tested with Ground Penetrating Radar (GPR) equipment. All longitudinal joints will be tested. The Kentucky Transportation Center (KTC) will perform all testing.

4.2 Validation. A minimum of one location per lane mile will be cored to verify GPR testing. Two 4 inch cores shall be obtained at each location. One core will be taken on each dowel bar end to expose both ends and allow physical measurements. KTC will conduct coring while the contractor shall patch all core holes.

November 5, 2014

PROPOSAL BID ITEMS

REVISED ADDENDUM #2: 11-17-15

151086

Page 1 of 5

Report Date 11/17/15

Section: 0001 - PAVING-ASPHALT ALTERNATE

LINE	BID CODE	ALT	DESCRIPTION	QUANTITY	UNIT	UNIT PRIC	FP	AMOUNT
0010	00003		CRUSHED STONE BASE	17,672.00	TON		\$	
0020	00013		LIME STABILIZED ROADBED	51,366.00	SQYD		\$	
0030	00014		LIME	1,373.00	TON		\$	
0040	00212		CL2 ASPH BASE 1.00D PG64-22	21,722.00	TON		\$	
0050	00301		CL2 ASPH SURF 0.38D PG64-22	4,250.00	TON		\$	
0060	00358		ASPHALT CURING SEAL	52.00	TON		\$	
0070	02598		FABRIC-GEOTEXTILE TYPE III	7,595.00	SQYD		\$	
0080	02702		SAND FOR BLOTTER	128.00	TON		\$	
0090	10203ND		PAVEMENT ADJUSTMENT (ADDED: 11-17-15)	1.00	LS	328,205.00	\$	\$328,205.00
0100	24779EC		INTELLIGENT COMPACTION FOR SOIL (ADDED: 11-12-15)	247,356.00	CUYD		\$	
0110	24780EC		INTELLIGENT COMPACTION FOR AGGREGATE (ADDED: 11-12-15)	17,672.00	TON		\$	
0120	24781EC		INTELLIGENT COMPACTION FOR ASPHALT (ADDED: 11-12-15)	25,972.00	TON		\$	

Section: 0002 - PAVING-CONCRETE ALTERNATE

LINE	BID CODE	ALT	DESCRIPTION	QUANTITY	UNIT	UNIT PRIC	FP	AMOUNT
0150	00003		CRUSHED STONE BASE (ADDED: 11-17-15)	17,672.00	TON		\$	
0160	00013		LIME STABILIZED ROADBED (ADDED: 11-17-15)	51,366.00	SQYD		\$	
0170	00014		LIME (ADDED: 11-17-15)	1,373.00	TON		\$	
0180	02084		JPC PAVEMENT-8 IN (ADDED: 11-17-15)	61,827.00	SQYD		\$	
0190	02599		FABRIC-GEOTEXTILE TYPE IV (ADDED: 11-17-15)	7,595.00	SQYD		\$	
0200	02702		SAND FOR BLOTTER (ADDED: 11-17-15)	128.00	TON		\$	
0210	10203ND		PAVEMENT ADJUSTMENT (ADDED: 11-17-15)	1.00	LS	221,543.00	\$	\$221,543.00
0220	24779EC		INTELLIGENT COMPACTION FOR SOIL (ADDED: 11-17-15)	247,356.00	CUYD		\$	
0230	24780EC		INTELLIGENT COMPACTION FOR AGGREGATE (ADDED: 11-17-15)	17,672.00	TON		\$	

Section: 0003 - ROADWAY

LINE	BID CODE	ALT	DESCRIPTION	QUANTITY	UNIT	UNIT PRIC	FP	AMOUNT
0240	01000		PERFORATED PIPE-4 IN	1,140.00	LF		\$	
0250	01010		NON-PERFORATED PIPE-4 IN	76.00	LF		\$	
0260	01020		PERF PIPE HEADWALL TY 1-4 IN	6.00	EACH		\$	
0270	01024		PERF PIPE HEADWALL TY 2-4 IN	7.00	EACH		\$	

PROPOSAL BID ITEMS

REVISED ADDENDUM #2: 11-17-15

151086

Page 2 of 5

Report Date 11/17/15

LINE	BID CODE	ALT	DESCRIPTION	QUANTITY	UNIT	UNIT PRIC	FP	AMOUNT
0280	01825		ISLAND CURB AND GUTTER (REVISED: 11-12-15)	26,758.00	LF		\$	
0290	01987		DELINEATOR FOR GUARDRAIL BI DIRECTIONAL WHITE	60.00	EACH		\$	
0300	02014		BARRICADE-TYPE III	18.00	EACH		\$	
0310	02091		REMOVE PAVEMENT	285.00	SQYD		\$	
0320	02159		TEMP DITCH	14,791.00	LF		\$	
0330	02200		ROADWAY EXCAVATION	247,356.00	CUYD		\$	
0340	02242		WATER	10.00	MGAL		\$	
0350	02351		GUARDRAIL-STEEL W BEAM-S FACE	2,375.00	LF		\$	
0360	02363		GUARDRAIL CONNECTOR TO BRIDGE END TY A	8.00	EACH		\$	
0370	02367		GUARDRAIL END TREATMENT TYPE 1	12.00	EACH		\$	
0380	02373		GUARDRAIL END TREATMENT TYPE 3	1.00	EACH		\$	
0390	02429		RIGHT-OF-WAY MONUMENT TYPE 1	115.00	EACH		\$	
0400	02432		WITNESS POST	3.00	EACH		\$	
0410	02483		CHANNEL LINING CLASS II	3,720.00	TON		\$	
0420	02484		CHANNEL LINING CLASS III	1,741.00	TON		\$	
0430	02545		CLEARING AND GRUBBING 66.63 ACRES	1.00	LS		\$	
0440	02555		CONCRETE-CLASS B	9.00	CUYD		\$	
0450	02562		TEMPORARY SIGNS (ADDED: 11-17-15)	175.00	SQFT		\$	
0460	02596		FABRIC-GEOTEXTILE TYPE I	1,538.00	SQYD		\$	
0470	02599		FABRIC-GEOTEXTILE TYPE IV	18,519.00	SQYD		\$	
0480	02650		MAINTAIN & CONTROL TRAFFIC	1.00	LS		\$	
0490	02701		TEMP SILT FENCE	7,375.00	LF		\$	
0500	02703		SILT TRAP TYPE A	134.00	EACH		\$	
0510	02704		SILT TRAP TYPE B	134.00	EACH		\$	
0520	02705		SILT TRAP TYPE C	67.00	EACH		\$	
0530	02706		CLEAN SILT TRAP TYPE A	402.00	EACH		\$	
0540	02707		CLEAN SILT TRAP TYPE B	402.00	EACH		\$	
0550	02708		CLEAN SILT TRAP TYPE C	201.00	EACH		\$	
0560	02726		STAKING	1.00	LS		\$	
0570	05950		EROSION CONTROL BLANKET	5,813.00	SQYD		\$	
0580	05953		TEMP SEEDING AND PROTECTION	206,250.00	SQYD		\$	
0590	05963		INITIAL FERTILIZER	.53	TON		\$	
0600	05964		20-10-10 FERTILIZER	.88	TON		\$	
0610	05985		SEEDING AND PROTECTION	148,000.00	SQYD		\$	
0620	05992		AGRICULTURAL LIMESTONE	10.59	TON		\$	
0630	06514		PAVE STRIPING-PERM PAINT-4 IN	45,639.00	LF		\$	
0640	06569		PAVE MARKING-THERMO CROSS-HATCH	11,098.00	SQFT		\$	
0650	06574		PAVE MARKING-THERMO CURV ARROW	10.00	EACH		\$	
0660	06576		PAVE MARKING-THERMO ONLY	5.00	EACH		\$	
0670	20166ES810		TEMPORARY PIPE	53.00	LF		\$	
0680	20210EP69		COHESIVE PILE CORE	13,458.00	CUYD		\$	
0690	20782NS714		PAVE MARKING THERMO-BIKE	17.00	EACH		\$	
0700	24386EC		PAVE MARKING THERMO-BIKE LANE ARROW	17.00	EACH		\$	
0710	24814EC		PIPELINE INSPECTION	14,074.00	LF		\$	

PROPOSAL BID ITEMS

REVISED ADDENDUM #2: 11-17-15

151086

Page 3 of 5

Report Date 11/17/15

Section: 0004 - DRAINAGE

LINE	BID CODE	ALT	DESCRIPTION	QUANTITY	UNIT	UNIT PRIC	FP	AMOUNT
0720	00440		ENTRANCE PIPE-15 IN	232.00	LF		\$	
0730	00441		ENTRANCE PIPE-18 IN	162.00	LF		\$	
0740	00462		CULVERT PIPE-18 IN	160.00	LF		\$	
0750	00466		CULVERT PIPE-30 IN	155.00	LF		\$	
0760	00469		CULVERT PIPE-42 IN	86.00	LF		\$	
0770	00470		CULVERT PIPE-48 IN (REVISED: 11-17-15)	185.00	LF		\$	
0780	00471		CULVERT PIPE-54 IN	269.00	LF		\$	
0790	00472		CULVERT PIPE-60 IN	260.00	LF		\$	
0800	00521		STORM SEWER PIPE-15 IN	7,348.00	LF		\$	
0810	00522		STORM SEWER PIPE-18 IN	2,329.00	LF		\$	
0820	00524		STORM SEWER PIPE-24 IN	2,321.00	LF		\$	
0830	00526		STORM SEWER PIPE-30 IN	202.00	LF		\$	
0840	00528		STORM SEWER PIPE-36 IN	110.00	LF		\$	
0850	01202		PIPE CULVERT HEADWALL-15 IN	2.00	EACH		\$	
0860	01204		PIPE CULVERT HEADWALL-18 IN	5.00	EACH		\$	
0870	01208		PIPE CULVERT HEADWALL-24 IN	1.00	EACH		\$	
0880	01210		PIPE CULVERT HEADWALL-30 IN	4.00	EACH		\$	
0890	01212		PIPE CULVERT HEADWALL-36 IN	1.00	EACH		\$	
0900	01216		PIPE CULVERT HEADWALL-48 IN	2.00	EACH		\$	
0910	01220		PIPE CULVERT HEADWALL-60 IN	2.00	EACH		\$	
0920	01450		S & F BOX INLET-OUTLET-18 IN	3.00	EACH		\$	
0930	01456		CURB BOX INLET TYPE A	68.00	EACH		\$	
0940	01480		CURB BOX INLET TYPE B	11.00	EACH		\$	
0950	01490		DROP BOX INLET TYPE 1	1.00	EACH		\$	
0960	01493		DROP BOX INLET TYPE 2	1.00	EACH		\$	
0970	01511		DROP BOX INLET TYPE 5D	8.00	EACH		\$	
0980	01568		DROP BOX INLET TYPE 13S	1.00	EACH		\$	
0990	24026EC		PIPE CULVERT HEADWALL-54 IN	3.00	EACH		\$	

Section: 0005 - BRIDGE-27364

LINE	BID CODE	ALT	DESCRIPTION	QUANTITY	UNIT	UNIT PRIC	FP	AMOUNT
1000	02231		STRUCTURE GRANULAR BACKFILL	792.60	CUYD		\$	
1010	02998		MASONRY COATING	645.00	SQYD		\$	
1020	03299		ARMORED EDGE FOR CONCRETE	66.00	LF		\$	
1030	08019		CYCLOPEAN STONE RIP RAP	1,686.00	TON		\$	
1040	08033		TEST PILES	61.00	LF		\$	
1050	08046		PILES-STEEL HP12X53	492.00	LF		\$	
1060	08094		PILE POINTS-12 IN	20.00	EACH		\$	
1070	08100		CONCRETE-CLASS A	126.80	CUYD		\$	
1080	08104		CONCRETE-CLASS AA	336.50	CUYD		\$	
1090	08151		STEEL REINFORCEMENT-EPOXY COATED	66,894.00	LB		\$	
1100	23813EC		DECK DRAIN	8.00	EACH		\$	
1110	24804EC		PPC I-BEAM 4N 78 49	745.00	LF		\$	
1120	24808ED		RAIL SYSTEM TYPE 3 MODIFIED-42 IN	150.50	LF		\$	
1130	24809ED		RAIL SYSTEM TYPE 3 MODIFIED-48 IN	150.50	LF		\$	

PROPOSAL BID ITEMS

REVISED ADDENDUM #2: 11-17-15

151086

Page 4 of 5

Report Date 11/17/15

Section: 0006 - BRIDGE-27363

LINE	BID CODE	ALT	DESCRIPTION	QUANTITY	UNIT	UNIT PRIC	FP	AMOUNT
1140	02230		EMBANKMENT IN PLACE	374.20	CUYD		\$	
1150	02998		MASONRY COATING	972.00	SQYD		\$	
1160	03299		ARMORED EDGE FOR CONCRETE	66.00	LF		\$	
1170	08001		STRUCTURE EXCAVATION-COMMON	370.00	CUYD		\$	
1180	08002		STRUCTURE EXCAV-SOLID ROCK	46.00	CUYD		\$	
1190	08019		CYCLOPEAN STONE RIP RAP	962.00	TON		\$	
1200	08033		TEST PILES	50.00	LF		\$	
1210	08046		PILES-STEEL HP12X53	303.00	LF		\$	
1220	08094		PILE POINTS-12 IN	16.00	EACH		\$	
1230	08100		CONCRETE-CLASS A	263.00	CUYD		\$	
1240	08104		CONCRETE-CLASS AA	504.40	CUYD		\$	
1250	08150		STEEL REINFORCEMENT	33,153.00	LB		\$	
1260	08151		STEEL REINFORCEMENT-EPOXY COATED	128,623.00	LB		\$	
1270	08637		PRECAST PC I BEAM TYPE 7	1,199.20	LF		\$	
1280	23813EC		DECK DRAIN	10.00	EACH		\$	
1290	24808ED		RAIL SYSTEM TYPE 3 MODIFIED-42 IN	243.00	LF		\$	
1300	24809ED		RAIL SYSTEM TYPE 3 MODIFIED-48 IN	243.00	LF		\$	

Section: 0007 - SEWER

LINE	BID CODE	ALT	DESCRIPTION	QUANTITY	UNIT	UNIT PRIC	FP	AMOUNT
1310	02690		SAFELOADING 8 IN PIPE	2.00	CUYD		\$	
1320	02690		SAFELOADING 21 IN PIPE	21.00	CUYD		\$	
1330	05985		SEEDING AND PROTECTION	325.00	SQYD		\$	
1340	14074		W PLUG EXISTING MAIN 8 IN	1.00	EACH		\$	
1350	14074		W PLUG EXISTING MAIN 21 IN	2.00	EACH		\$	
1360	15025		S ENCASMENT STEEL OPEN CUT RANGE 6	200.00	LF		\$	
1370	15092		S MANHOLE 5 FT DIA	2.00	EACH		\$	
1380	15112		S PIPE PVC 08 INCH	48.00	LF		\$	
1390	21934NN		BYPASS PUMPING 8 IN	40.00	HOURL		\$	
1400	21934NN		BYPASS PUMPING 21 IN	120.00	HOURL		\$	
1410	22801NN		ABANDON AND SAFELOAD MANHOLE	3.00	EACH		\$	
1420	23726EC		SANITARY SEWER MANHOLE-DOGHOUSE	3.00	EACH		\$	
1430	24564EN		PVC PIPE 21 IN	281.00	LF		\$	
1440	24814EC		PIPELINE INSPECTION WITH TV SURVEY	329.00	LF		\$	

Section: 0008 - SIGNING

PROPOSAL BID ITEMS

REVISED ADDENDUM #2: 11-17-15

151086

Page 5 of 5

Report Date 11/17/15

LINE	BID CODE	ALT	DESCRIPTION	QUANTITY	UNIT	UNIT PRIC	FP	AMOUNT
1450	06406		SBM ALUM SHEET SIGNS .080 IN	165.20	SQFT		\$	
1460	06407		SBM ALUM SHEET SIGNS .125 IN	178.50	SQFT		\$	
1470	06410		STEEL POST TYPE 1	900.00	LF		\$	
1480	21596ND		GMSS TYPE D	5.00	EACH		\$	
1490	24631EC		BARCODE SIGN INVENTORY	87.00	EACH		\$	

Section: 0009 - WATERLINE - ADDED: 11-12-15

LINE	BID CODE	ALT	DESCRIPTION	QUANTITY	UNIT	UNIT PRIC	FP	AMOUNT
1500	01314		PLUG PIPE (ADDED: 11-12-15)	7.00	EACH		\$	
1510	14011		W ENCASEMENT STEEL BORED RANGE 6 (ADDED: 11-12-15)	680.00	LF		\$	
1520	14017		W ENCASEMENT STEEL OPEN CUT RANGE 6 (ADDED: 11-12-15)	735.00	LF		\$	
1530	14021		W FIRE HYDRANT REMOVE (ADDED: 11-12-15)	2.00	EACH		\$	
1540	14500		W AIR RELEASE VALVE 1 INCH INST (ADDED: 11-12-15)	4.00	EACH		\$	
1550	14510		W FIRE HYDRANT ASSEMBLY INST (ADDED: 11-12-15)	4.00	EACH		\$	
1560	14514		W METER 1 INCH INST (ADDED: 11-12-15)	2.00	EACH		\$	
1570	14529		W PIPE DUCTILE IRON 24 INCH INST (ADDED: 11-12-15)	8,580.00	LF		\$	
1580	14561		W PLUG EXISTING MAIN INST (ADDED: 11-12-15)	1.00	EACH		\$	
1590	14584		W TIE-IN 24 INCH INST (ADDED: 11-12-15)	8.00	EACH		\$	
1600	14595		W VALVE 24 INCH INST (ADDED: 11-12-15)	13.00	EACH		\$	

Section: 0010 - DEMOBILIZATION &/OR MOBILIZATION

LINE	BID CODE	ALT	DESCRIPTION	QUANTITY	UNIT	UNIT PRIC	FP	AMOUNT
0130	02568		MOBILIZATION	1.00	LS		\$	
0140	02569		DEMOBILIZATION	1.00	LS		\$	